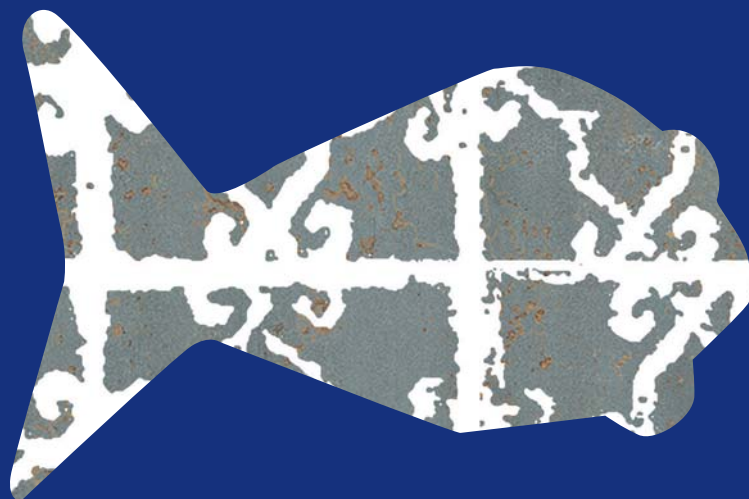


poetry
decor

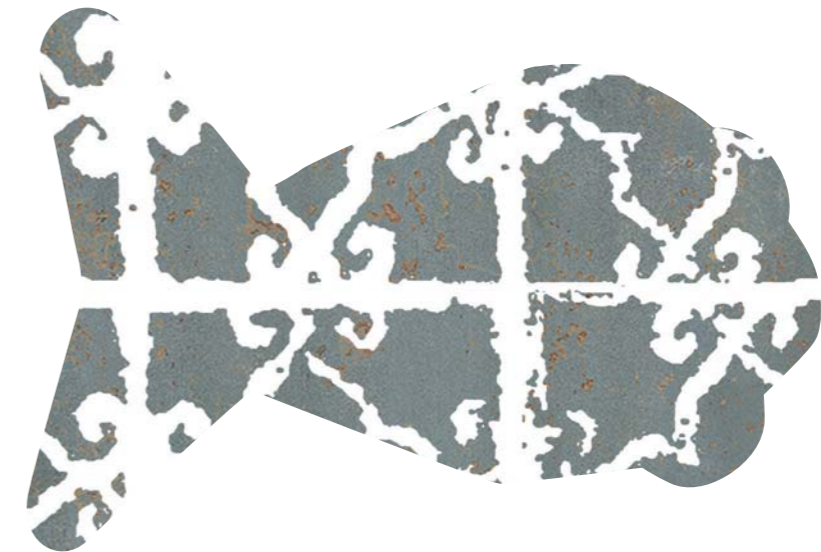


paola navone

for

ABK

**poetry
decor**



**paola navone
for
ABK**

POESIA DOMESTICA

“Cerco sempre di promuovere l'imperfezione, anche nello sviluppo del prodotto industriale, che ha regole e processi ben definiti. I risultati sono sempre sorprendenti.”

“I always strive to promote imperfection, even when developing industrial products which have clearly defined rules and processes. The results are always surprising.”

Paola Navone



poetry
decor

PAOLA NAVONE FOR ABK

Il design è poesia applicata allo spazio, interpretazione artistica della materia, e non è un caso se i designer italiani sono ammirati nel mondo. Tra questi, Paola Navone, designer, architetto e art director milanese, si distingue per la personalità eclettica e lo spirito libero, aperto a diverse culture. Dalla collaborazione tra ABK e Studio OTTO - Paola Navone, nasce POETRY HOUSE, un progetto che esplora esperienze creative, materiali, segni grafici ispirati alle sue opere più iconiche e rappresentative. E' la scrittura di una vera e propria poetica dell'abitare, che condensa il vissuto artistico della designer e la sua storia, portandoli negli ambienti architettonici. POETRY HOUSE intende sottolineare il valore di un percorso progettuale che conferma la presenza di ABK nel mondo del design, un viaggio che vede ora le prime tappe ed è destinato a continuare nel tempo. Il progetto inizia proponendo diverse tipologie di superfici ceramiche legno, pietra e decorazione.

Design is poetry applied to space, an artistic interpretation of matter, and it is no coincidence that Italian designers are admired all over the world. One of these is Paola Navone, a Milanese designer, architect and art director renowned for her eclectic personality, free spirit and interest in different cultures. A collaboration between ABK and Studio OTTO - Paola Navone has resulted in POETRY HOUSE, a project that explores creative experiences, materials and graphic designs inspired by her most iconic and representative works. It is an authentic poetry of living, a distillation of the personal history and artistic experience that the designer brings to architectural spaces. POETRY HOUSE is the first step in a collaboration that will see ABK strengthen its presence in the world of design and is destined to continue in the future. The project initially features different collections of ceramic surfaces wood, stone and decors.

poetry decor

POETRY DECOR racconta in chiave inedita il tema della decorazione, attraverso una serie di pattern esclusivi, accomunati dall'idea di handmade e recupero.

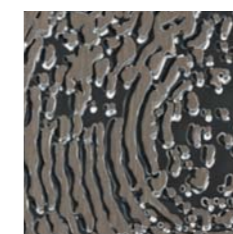
Le superfici di partenza sono un effetto intonaco delabrè, una lamiera ossidata color verderame ed un effetto legno che richiama la collezione Poetry Wood.

I segni concepiti da Studio Otto-Paola Navone riaffermano il primato dell'unicità e dell'imperfetto come valore estetico. La proposta, che si sviluppa sia su piccole formelle 20x20, che su grandi lastre di 120x280 cm è caratterizzata da smalti bianco calce e da metalli a effetto raku, che con l'irregolarità delle loro piccole ossidazioni sottolineano ulteriormente l'unicità del prodotto.

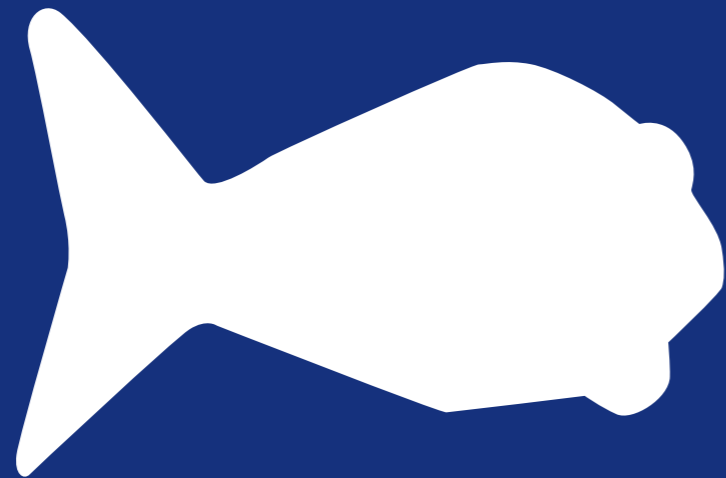
POETRY DECOR takes a fresh approach to decoration with a series of exclusive patterns inspired by handmade and recycled materials.

They are available with a choice of bases ranging from a decaying plaster effect to a surface inspired by a green-coloured oxidised metal sheet and a wood-look base reminiscent of the Poetry Wood collection.

The designs created by Studio Otto-Paola Navone explore the concept of uniqueness and imperfection as an aesthetic value. The range consists of both small 20x20 cm tiles and large 120x280 cm slabs and uses lime white glazes and raku-effect metals with slightly irregular oxidised patterns to further enhance the unique qualities of the product.



index



p 8

120x280

LASTRE IN GRES
PORCELLANATO

PORCELAIN
SLABS



p 18

20x20

GRES
PORCELLANATO

PORCELAIN
TILES

120x280

LASTRE IN GRES PORCELLANATO
PORCELAIN SLABS

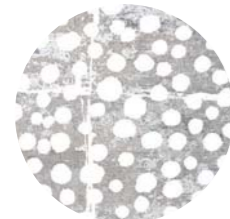
CEMENT



STAMP PAINT



STAMP METAL



POIS PAINT



POIS METAL



LINES PAINT



LINES METAL



TRACES PAINT



TRACES METAL

VERDIGRIS



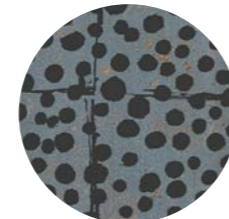
STAMP PAINT



STAMP METAL



POIS PAINT



POIS METAL



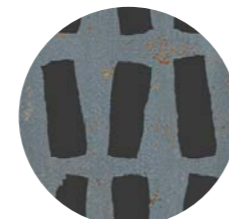
LINES PAINT



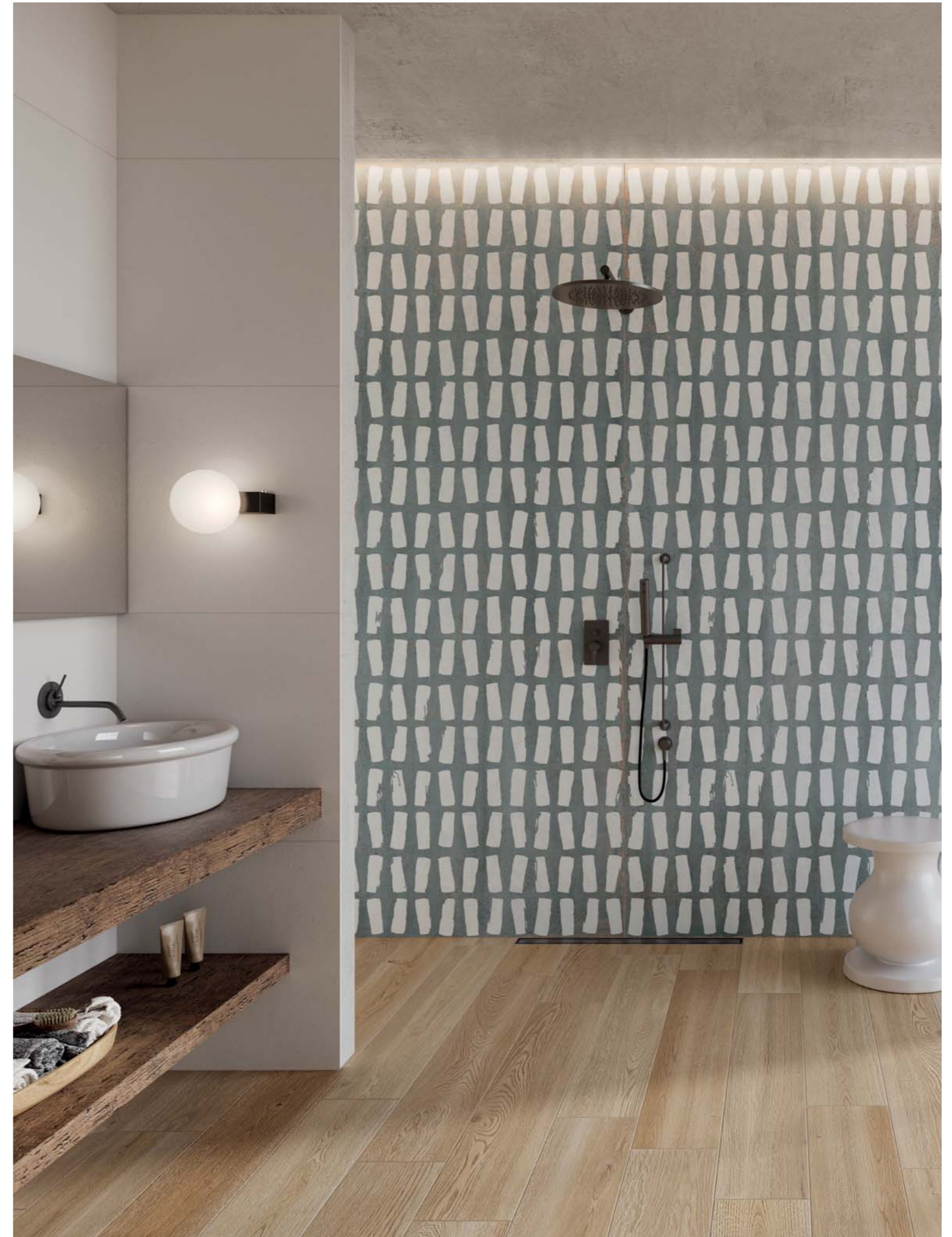
LINES METAL



TRACES PAINT



TRACES METAL



wall
POETRY DECOR TRACES PAINT VERDIGRIS 120x280
WIDE&STYLE MINI SNOW 60x120

floor
POETRY WOOD GOLD 20x120



wall
 POETRY DECOR TRACES PAINT CEMENT 120x280
 LAB325 BASE ASH 120x280

floor
 LAB325 BASE ASH 60x120



wall
 POETRY DECOR TRACES METAL CEMENT 120x280

floor
 GHOST GREY 120x120



wall
POETRY DECOR POIS PAINT VERDIGRIS 120x280

floor
POETRY WOOD MUD 20x120 / 30x120

wall
POETRY DECOR POIS METAL VERDIGRIS 120x280





wall
 POETRY DECOR LINES PAINT CEMENT 120x280
 GHOST GREY 120x280

floor and washbasin top
 POETRY STONE PIASE MUD 60x120



wall
 POETRY DECOR LINES METAL VERDIGRIS 120x280

floor
 POETRY STONE PIASE SMOKE 120x120



wall
POETRY DECOR STAMP METAL VERDIGRIS 120x280
BLEND CONCRETE ASH 120x280

floor
ECO CHIC AVANA 20x170



wall
POETRY DECOR STAMP PAINT CEMENT 120x280

floor
OUT.20 POETRY WOOD GOLD R11 30x180 20 mm

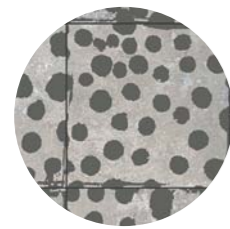
20x20

GRES PORCELLANATO
PORCELAIN TILES

CEMENT



STAMP METAL



POIS METAL



LINES METAL

VERDIGRIS



STAMP PAINT



POIS PAINT



LINES PAINT

WOOD



PAINT WOOD



METAL OAK



METAL MUD



wall
POETRY DECOR POIS PAINT VERDIGRIS 20x20
BLEND CONCRETE GREY 120x280

floor
POETRY DECOR POIS PAINT VERDIGRIS 20x20



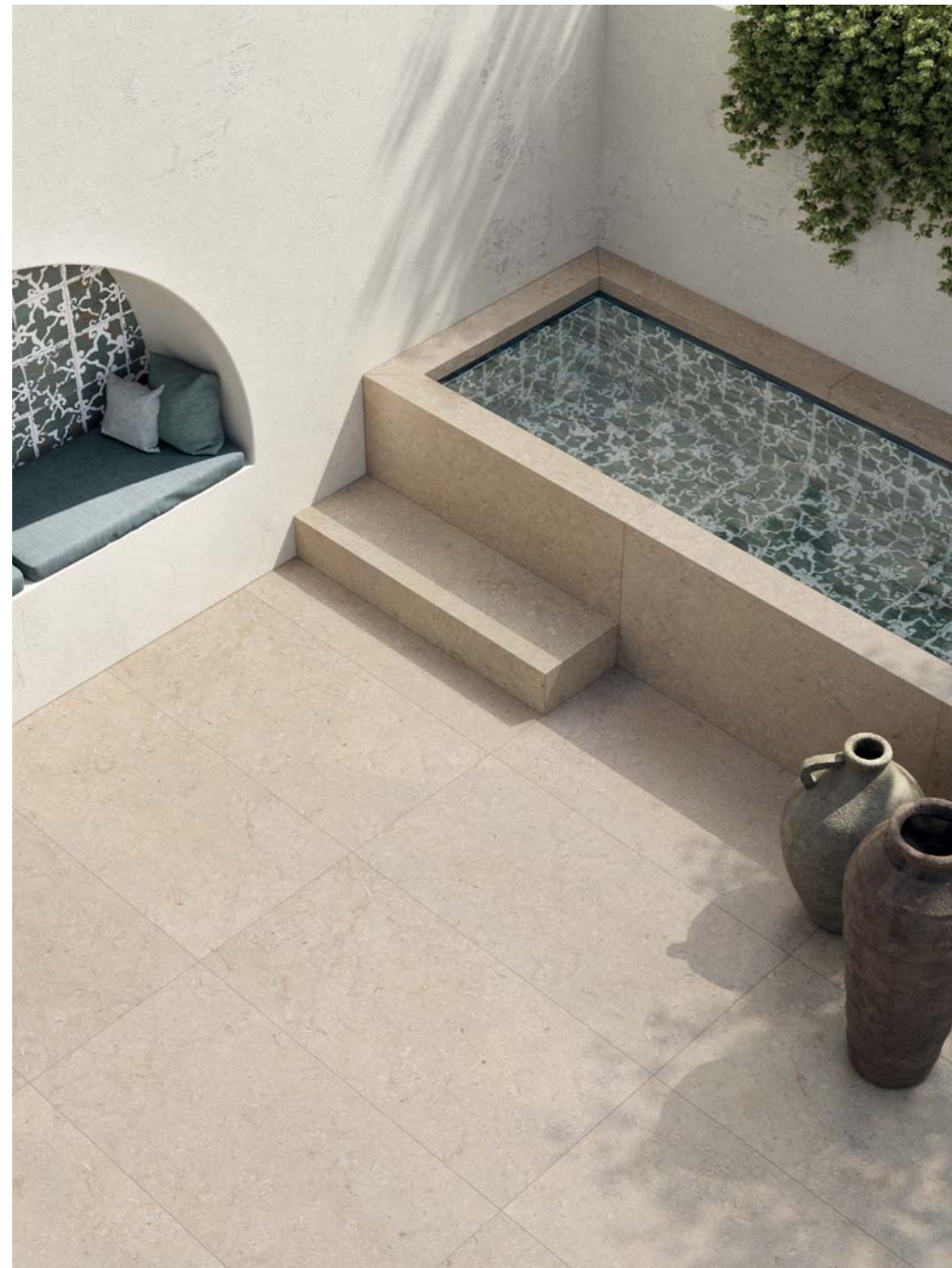
wall
POETRY DECOR POIS PAINT VERDIGRIS 20x20
20



wall
POETRY DECOR STAMP / PAINT / LINES PAINT VERDIGRIS 20x20
floor
POETRY STONE PIRENEI GREY 60x120
21

pool and wall
POETRY DECOR STAMP PAINT VERDIGRIS 20x20

floor
POETRY STONE TRANI BEIGE R11 60x120 8,5 mm



wall
POETRY STONE TRANI BEIGE 120x280
POETRY WOOD ECRU 20x120

floor
POETRY DECOR STAMP PAINT VERDIGRIS 20x20



floor
POETRY DECOR PAINT WOOD 20x20
POETRY WOOD GOLD 20x120

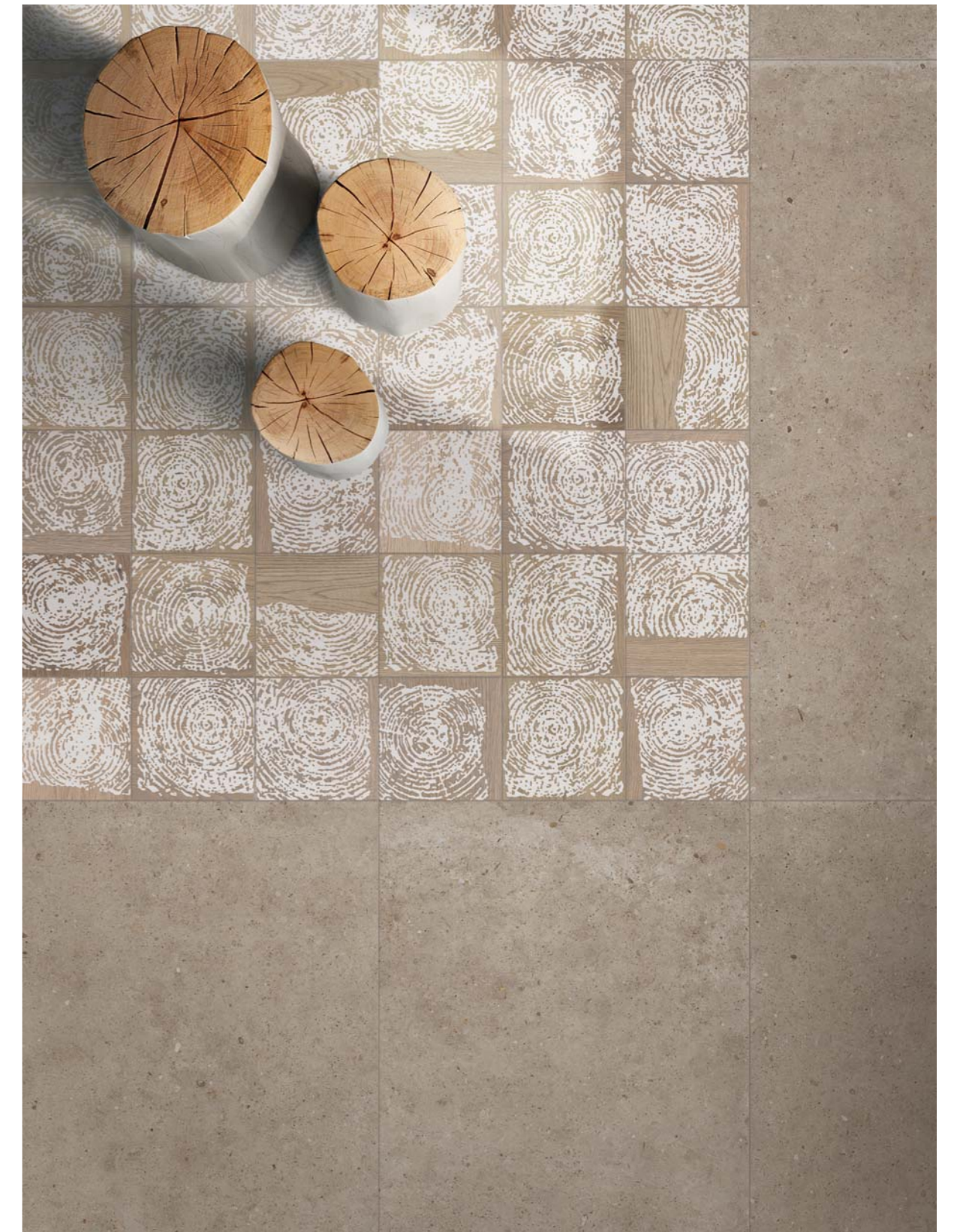
wall
POETRY DECOR PAINT WOOD 20x20

top and kitchen volume
ABKSTONE
PIRENEI ECRU 160x320 12/20 mm



wall
POETRY DECOR PAINT WOOD 20x20

floor
POETRY WOOD ECRU 30x120



floor
POETRY DECOR PAINT WOOD 20x20
POETRY STONE PIRENEI ECRU 60x120

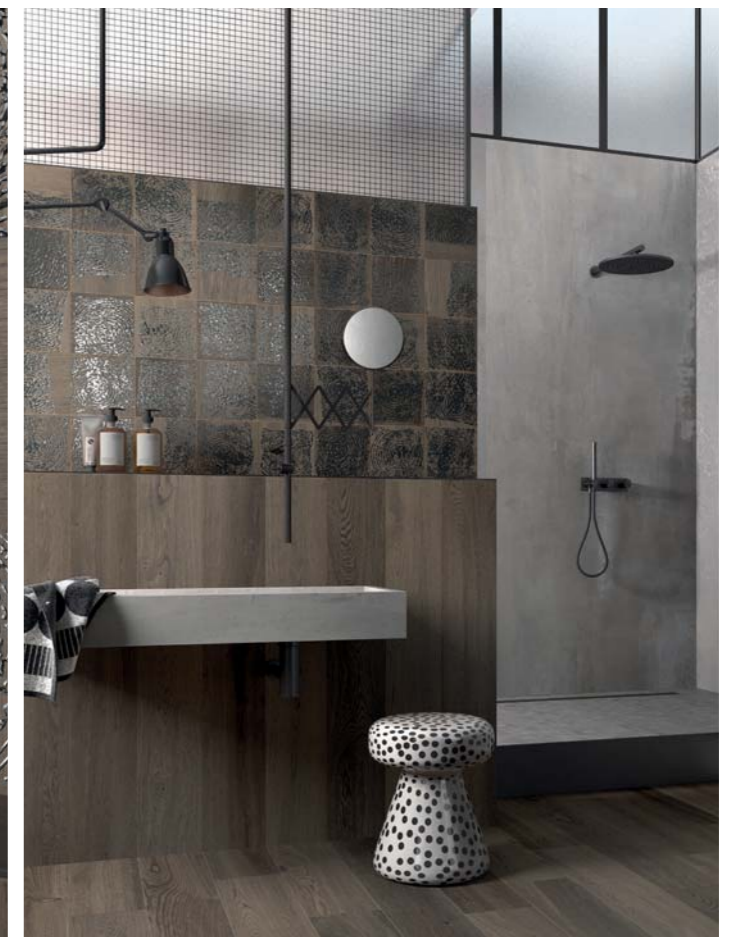


wall
POETRY DECOR METAL OAK 20x20

floor
POETRY STONE PIASE MUD 120x120

wall
POETRY DECOR METAL MUD 20x20
POETRY WOOD MUD 20x120
INTERNO 9 SILVER 120x280

floor
POETRY WOOD MUD 20x120
INTERNO 9 MOSAICO QUADRETTI 30x30





wall
POETRY DECOR LINES METAL CEMENT 20x20
GHOST GREY 60x120 TAUPE 60x120

floor
GHOST TAUPE 60x120

floor
POETRY DECOR LINES / STAMP / POIS METAL CEMENT 20x20

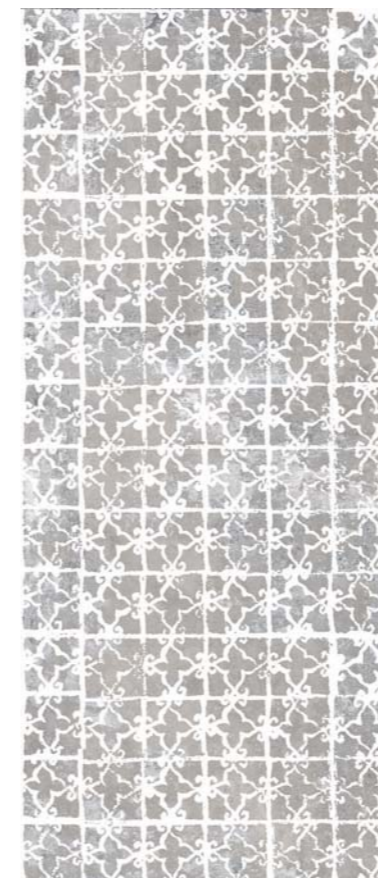


poetry
decor

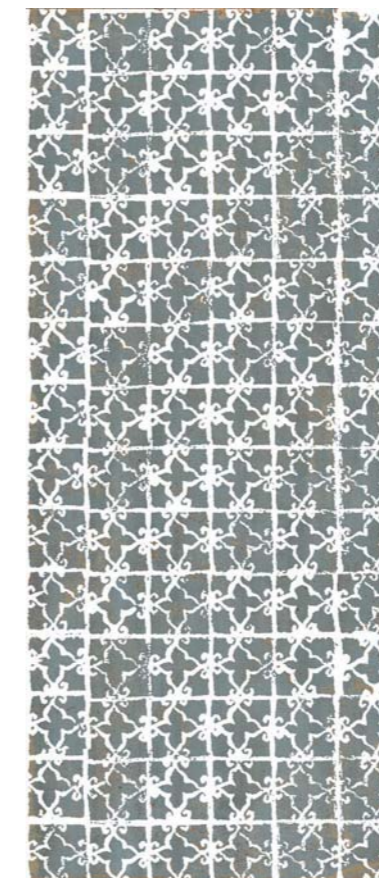
120x280

POETRY DECOR

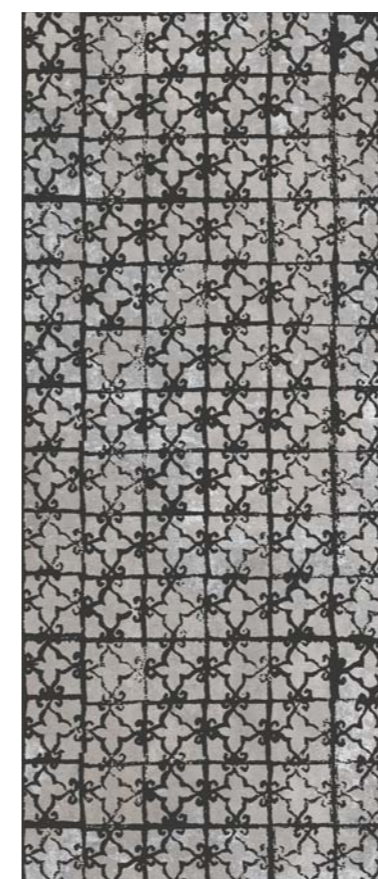
6 mm



120x280
STAMP PAINT CEMENT rett.
0010223



120x280
STAMP PAINT VERDIGRIS rett.
0010229



120x280
*STAMP METAL CEMENT rett.
0010226



120x280
*STAMP METAL VERDIGRIS rett.
0010232

LASTRE IN GRES PORCELLANATO - PORCELAIN SLABS

Articoli venduti al pezzo, su richiesta.
On demand items, sale per piece.

*Metalli. Si consiglia di pulire la superficie senza utilizzare prodotti contenenti sostanze abrasive per non alterare la brillantezza del metallo prezioso.
Metal. Do not use products containing abrasive substances to clean the decorative element so as not to affect the shine of the precious metal.

POETRY DECOR

6 mm



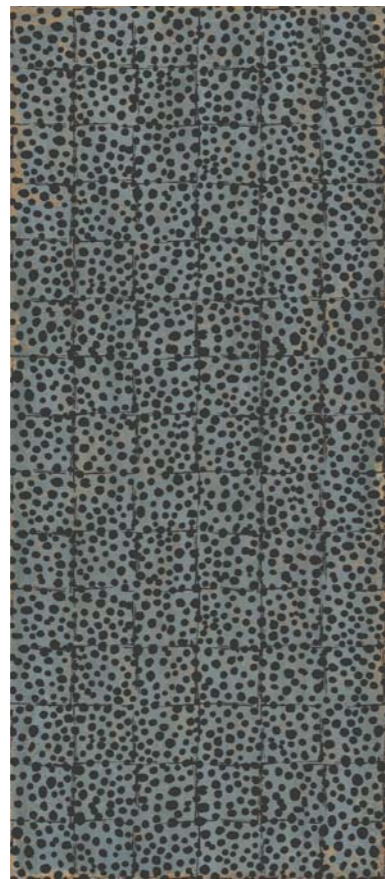
120x280
POIS PAINT CEMENT rett.
0010222



120x280
POIS PAINT VERDIGRIS rett.
0010228



120x280
* POIS METAL CEMENT rett.
0010225



120x280
* POIS METAL VERDIGRIS rett.
0010231

Articoli venduti al pezzo, su richiesta.
On demand items, sale per piece.



120x280
LINES PAINT CEMENT rett.
0010221



120x280
* LINES METAL CEMENT rett.
0010224

POETRY DECOR

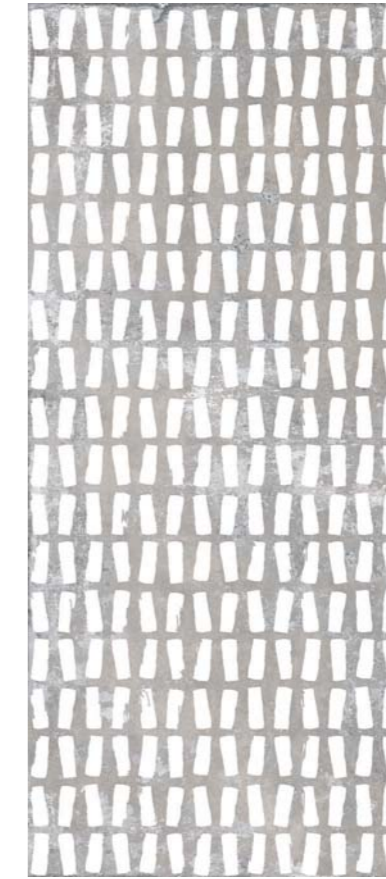
LASTRE IN GRES PORCELLANATO - PORCELAIN SLABS



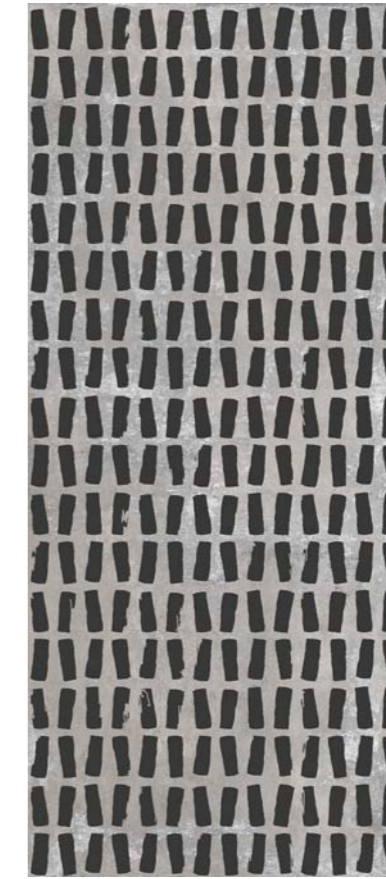
120x280
LINES PAINT VERDIGRIS rett.
0010661



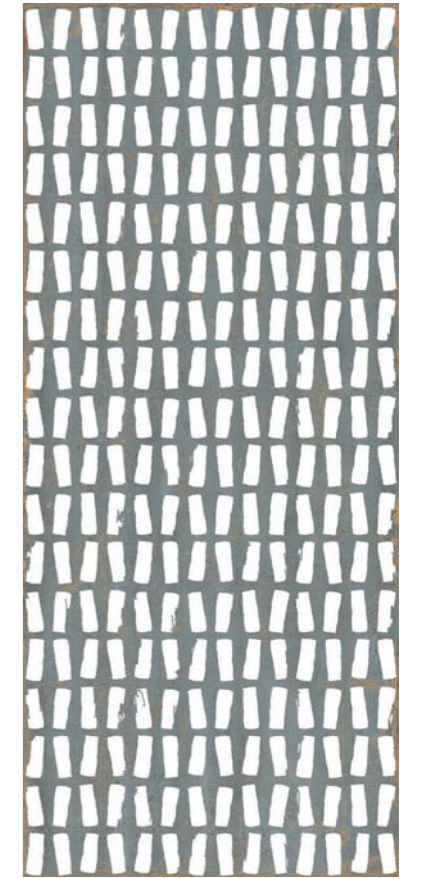
120x280
* LINES METAL VERDIGRIS rett.
0010230



120x280
TRACES PAINT CEMENT rett.
0010662



120x280
* TRACES METAL CEMENT rett.
0010664



120x280
TRACES PAINT VERDIGRIS rett.
0010663



120x280
* TRACES METAL VERDIGRIS rett.
0010665

* Metalli. Si consiglia di pulire la superficie senza utilizzare prodotti contenenti sostanze abrasive per non alterare la brillantezza del metallo prezioso.
Metal. Do not use products containing abrasive substances to clean the decorative element so as not to affect the shine of the precious metal.

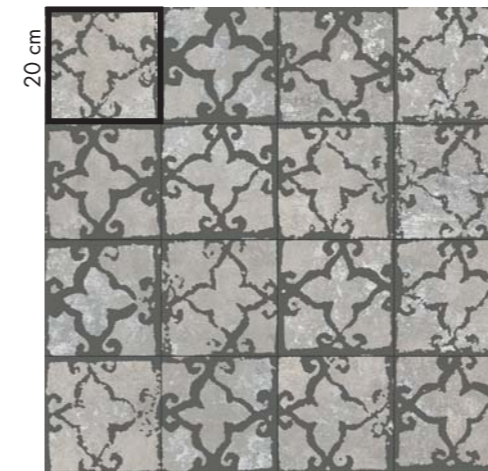
poetry
decor
20x20

POETRY DECOR

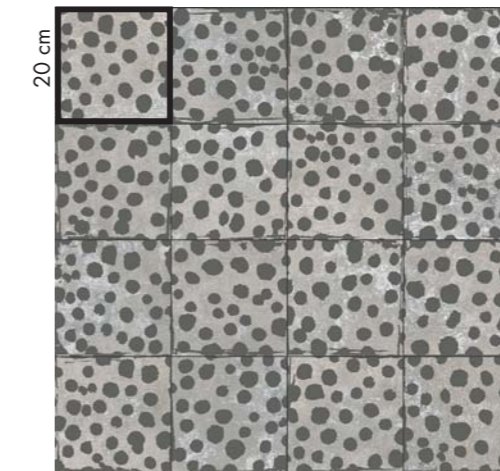
Articoli venduti al Mq.
Sales per Sqm.

GRES PORCELLANATO - PORCELAIN TILES

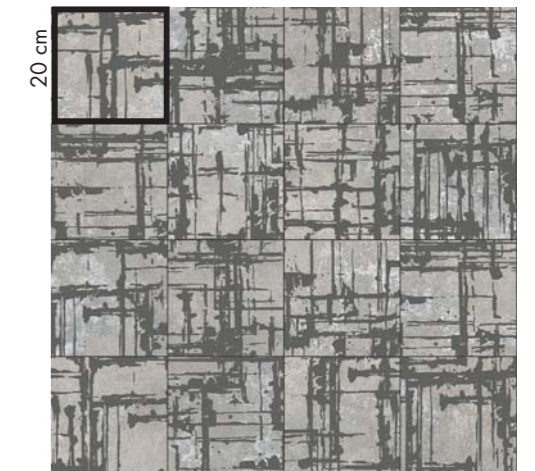
8,5 mm



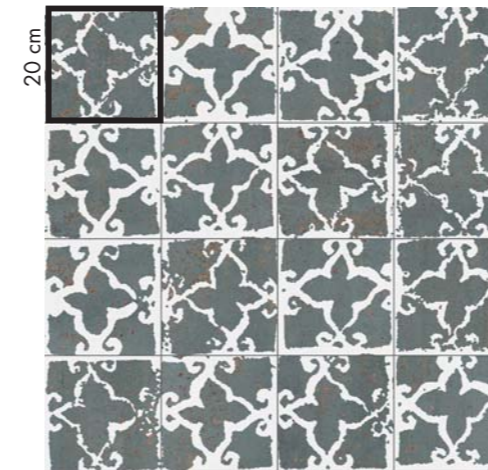
20x20
* STAMP METAL CEMENT nat.
0010667



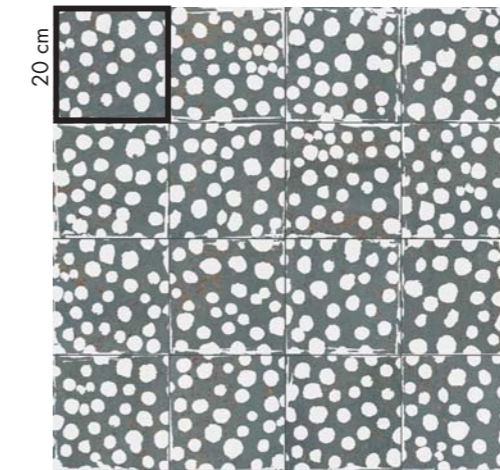
20x20
* POIS METAL CEMENT nat.
0010669



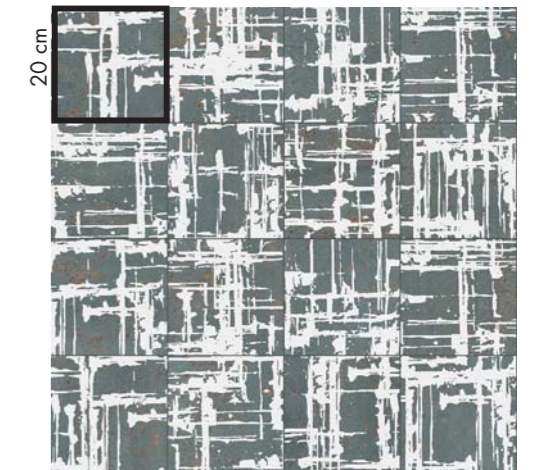
20x20
* LINES METAL CEMENT nat.
0010671



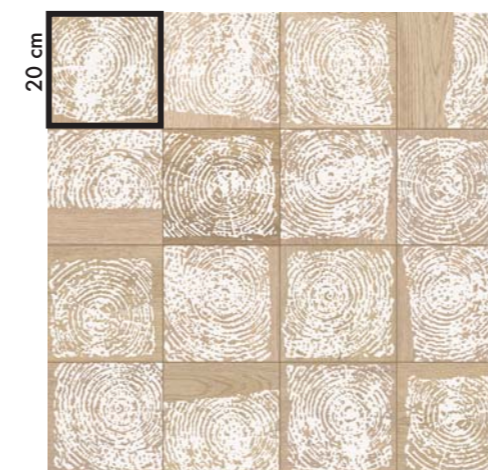
20x20
STAMP PAINT VERDIGRIS nat.
0010666 PEI V



20x20
POIS PAINT VERDIGRIS nat.
0010668 PEI V



20x20
LINES PAINT VERDIGRIS nat.
0010670 PEI V



20x20
PAINT WOOD nat.
0010074 PEI V



20x20
* METAL OAK nat.
0010076



20x20
* METAL MUD nat.
0010077

Articolo composto da pattern grafici diversi e miscelati in modo casuale in fase di inscatolamento. Non si garantisce pertanto la presenza costante di tutti i soggetti all'interno delle confezioni.
This article comes in several different versions that are mixed randomly at the time of packaging. There is therefore no guarantee that all patterns will be present in any individual box.

* Metalli. Si consiglia di pulire la superficie senza utilizzare prodotti contenenti sostanze abrasive per non alterare la brillantezza del metallo prezioso.
Metal. Do not use products containing abrasive substances to clean the decorative element so as not to affect the shine of the precious metal.

CARATTERISTICHE TECNICHE TECHNICAL FEATURES

GRES PORCELLANATO A MASSA COLORATA - COLORED BODY PORCELAIN

CLASSIFICAZIONE SECONDO NORME UNI EN 14411 (ISO 13006) ALLEGATO G-Gruppo B1a GL
CLASSIFICATION IN ACCORDANCE WITH UNI EN 14411 (ISO 13006) ANNEX G-Group B1a GL

120x280

PROPRIETÀ FISICO-CHIMICHE PHYSICAL-CHEMICAL PROPERTIES	NORMA NORM	VALORE PRESCRITTO DALLE NORME VALUE PRESCRIBED FROM THE NORMS	VALORE ABK ABK VALUE
LUNGHEZZA E LARGHEZZA DIMENSIONE MEDIA DI OGNI PIASTRELLA LENGTH AND WIDTH OF THE AVERAGE-SIZES TILE	UNI EN ISO 10545/2	± 0,5%	CONFORME ACCORDING TO
SPESSORE THICKNESS	UNI EN ISO 10545/2	± 5%	CONFORME ACCORDING TO
RETTILINEARITÀ SPIGOLI WARPAGES OF EDGES	UNI EN ISO 10545/2	± 0,5%	CONFORME ACCORDING TO
ORTOGONALITÀ WEDGING	UNI EN ISO 10545/2	± 0,6%	CONFORME ACCORDING TO
PLANARITÀ FLATNESS	UNI EN ISO 10545/2	± 0,5%	CONFORME ACCORDING TO
ASSORBIMENTO D'ACQUA WATER ABSORPTION	UNI EN ISO 10545/3	E ≤ 0,5%	CONFORME ACCORDING TO
RESISTENZA ALLA FLESSIONE BENDING STRENGTH	UNI EN ISO 10545/4	≥ 35 N/mm ²	CONFORME ACCORDING TO
FORZA DI ROTTURA (< 7,5 mm) BREAKING STRENGTH	UNI EN ISO 10545/4	≥ 700 N	CONFORME ACCORDING TO
RESISTENZA AGLI SBALZI TERMICI THERMAL SHOCK RESISTANCE	UNI EN ISO 10545/9	RICHIESTA REQUIRED	RESISTE RESISTS
RESISTENZA AL GELO FROST RESISTANCE	UNI EN ISO 10545/12	RICHIESTA REQUIRED	INGELIVO FROST PROOF
RESISTENZA ALL'ATTACCO CHIMICO CHEMICAL RESISTANCE	UNI EN ISO 10545/13	-	GA
RESISTENZA ALLE MACCHIE RESISTANCE TO STAINING	UNI EN ISO 10545/14	GL ≥ MINIMO CLASSE 3	CONFORME ACCORDING TO

CARATTERISTICHE TECNICHE TECHNICAL FEATURES

GRES PORCELLANATO - PORCELAIN TILES

CLASSIFICAZIONE SECONDO NORME UNI EN 14411 (ISO 13006) ALLEGATO G-Gruppo B1a GL
CLASSIFICATION IN ACCORDANCE WITH UNI EN 14411 (ISO 13006) ANNEX G-Group B1a GL

20x20

PROPRIETÀ FISICO-CHIMICHE PHYSICAL-CHEMICAL PROPERTIES	NORMA NORM	VALORE PRESCRITTO DALLE NORME VALUE PRESCRIBED FROM THE NORMS	VALORE ABK ABK VALUE
LUNGHEZZA E LARGHEZZA DIMENSIONE MEDIA DI OGNI PIASTRELLA LENGTH AND WIDTH OF THE AVERAGE-SIZES TILE	UNI EN ISO 10545/2	± 0,5%	CONFORME ACCORDING TO
SPESSORE THICKNESS	UNI EN ISO 10545/2	± 5%	CONFORME ACCORDING TO
RETTILINEARITÀ SPIGOLI WARPAGES OF EDGES	UNI EN ISO 10545/2	± 0,5%	CONFORME ACCORDING TO
ORTOGONALITÀ WEDGING	UNI EN ISO 10545/2	± 0,6%	CONFORME ACCORDING TO
PLANARITÀ FLATNESS	UNI EN ISO 10545/2	± 0,5%	CONFORME ACCORDING TO
ASSORBIMENTO D'ACQUA WATER ABSORPTION	UNI EN ISO 10545/3	E ≤ 0,5%	CONFORME ACCORDING TO
RESISTENZA ALLA FLESSIONE BENDING STRENGTH	UNI EN ISO 10545/4	≥ 35 N/mm ²	CONFORME ACCORDING TO
FORZA DI ROTTURA BREAKING STRENGTH	UNI EN ISO 10545/4	≥ 1300 N	CONFORME ACCORDING TO
RESISTENZA ALL'ABRASIONE SUPERFICIALE PER PIASTRELLE SMALTATE ABRASION RESISTANCE FOR GLAZED TILES	UNI EN ISO 10545/7	DICHIARATO DALL'AZIENDA PRODUTTRICE DECLARED BY THE MANUFACTURING COMPANY	-
RESISTENZA AGLI SBALZI TERMICI THERMAL SHOCK RESISTANCE	UNI EN ISO 10545/9	RICHIESTA REQUIRED	RESISTE RESISTS
RESISTENZA AL GELO FROST RESISTANCE	UNI EN ISO 10545/12	RICHIESTA REQUIRED	INGELIVO FROST PROOF
RESISTENZA ALL'ATTACCO CHIMICO CHEMICAL RESISTANCE	UNI EN ISO 10545/13	MIN GB	-
RESISTENZA ALLE MACCHIE RESISTANCE TO STAINING	UNI EN ISO 10545/14	GL ≥ MINIMO CLASSE 3	-
RESISTENZA ALLO SCIVOLAMENTO SLIP RESISTANCE	B.C.R.A. C.A.	μ 0,19 SCIVOLOSITÀ PERICOLOSA - DANGEROUSLY SLIPPERY 0,20 < μ < 0,39 SCIVOLOSITÀ ECCESSIVA - EXCESSIVELY SLIPPERY 0,40 < μ < 0,74 ATTRITO SODDISFACENTE - SATISFACTORY GRIP μ 0,75 ATTRITO ECCELLENTE - EXCELLENT GRIP	> 0,40
	B.C.R.A. G.B.		> 0,40
	ASTM C 1028 (S.C.O.F.)	SLIP RESISTANT (> 0,60)	> 0,60 DRY > 0,60 WET
	DIN 51130	IN FUNZIONE DELL'AMBIENTE O DELLA ZONA DI LAVORO BASING ON THE ENVIRONMENT OR THE WORKING AREA	R9
	DIN 51097	-	A
	ANSI A 137-1:2012 (D.C.O.F.)	≥ 0,42	> 0,42

IMBALLI - PACKAGING

F.to nominale Nominal size	Finitura Finish	Spessore Thickness	F.to reale (mm) Work size (mm)	Imballo Packing	Pz/Scat. Pcs/Box	Mq/Scat. Sqm/Box	Kg/Scat. Kg/Box	Scat./Imb. Box/Packing	Pz Totali Pcs Total	Mq totali Sqm total	Kg Imb. Kg Packing	Kg Totali Kg Total
120x280 48"x112"	rett	6	1194x2800	Cassa Crate	-	-	-	-	-	-	-	-
				Cavalletto Rack pallet	-	-	-	-	-	-	-	-
				Cavalletto Container Container Rack pallet	-	-	-	-	-	-	-	-
20x20 8"x8"	nat.	8,5	-	pallet	26	1,04	19,00	36	936	37,44	20	704

L'unità minima di vendita per tutti gli articoli (fondi, decori e pezzi speciali) è la scatola completa. / The minimum sales quantity for all items (plain tiles, decorations and special trims) is one full box.
I dati relativi agli imballi sono aggiornati al momento della stampa del catalogo e pertanto possono subire variazioni nel corso del tempo. / Data referring to packaging have been update at time of printing; the actual data may be slightly different.
Pezzi speciali e decori per effetto delle lavorazioni, possono presentare variazioni di tonalità. / Due to working process special trims and decors, may show variation in tonality.

Le caratteristiche di superficie e le tonalità dei prodotti ceramici illustrati in questo catalogo sono da ritenersi puramente indicative.
Optical features and color shades of ceramic materials illustrated in this catalogue are to be regarded as mere indications.



Thanks to
Gervasoni
Baxter
Martinelli
Falper
Slide
Cristalleria St Louis

Marketing ABK Group
Direfarecreate.it
227

ABK
Brand of ABK Group Industrie Ceramiche s.p.a. - via S.Lorenzo N.24/a - 41034 Finale Emilia - Modena Italy
tel. 0535 761311 - fax 0535 761320/92800/761351

www.abk.it
#abkemozioni

ABK
EMOZIONI IN SUPERFICIE