

<E> <X> <E> <G> <O>

<A> <B>

**STARLINE**

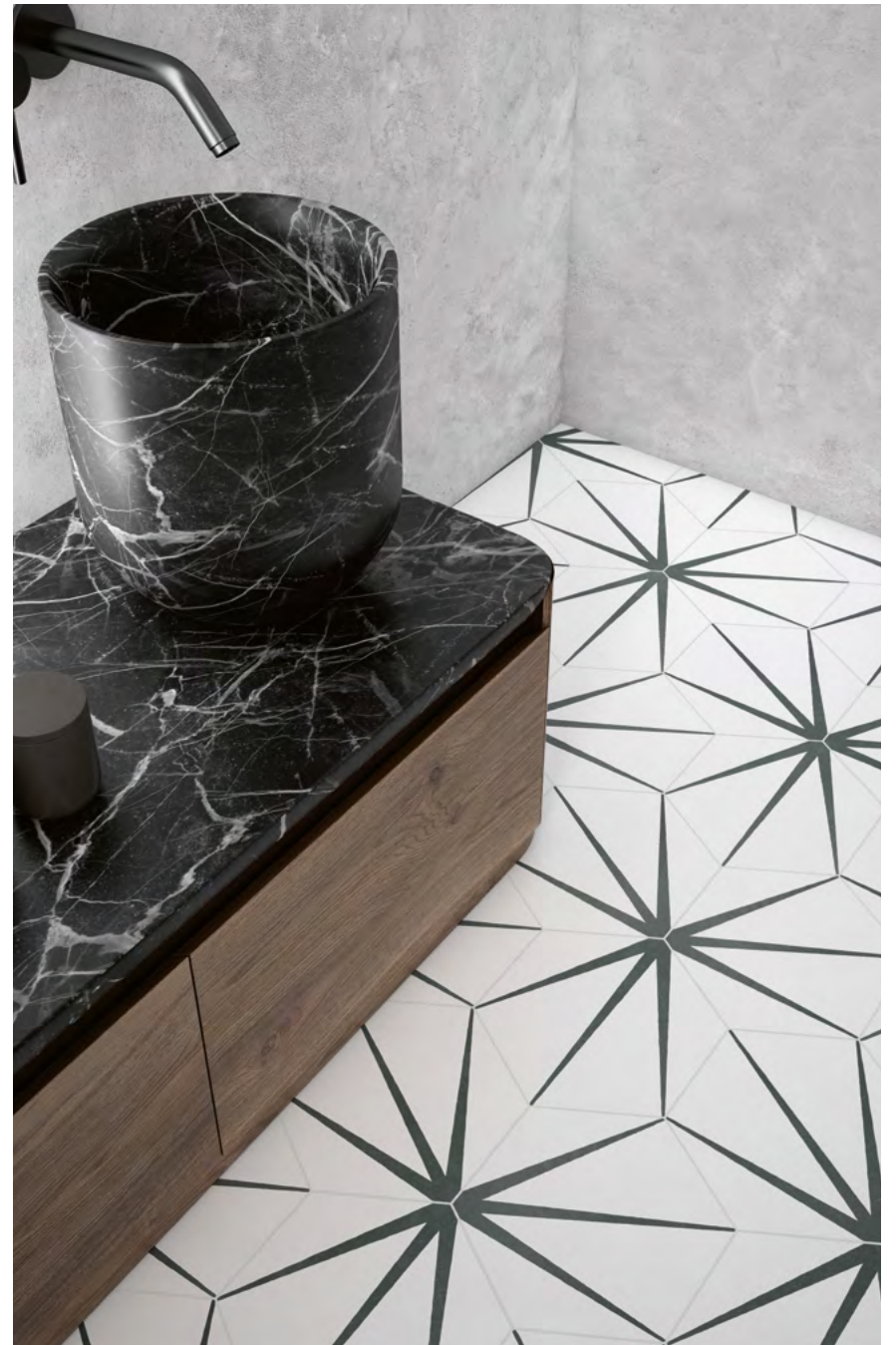
COLLECTION

**APAVISA**

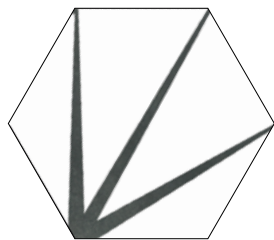
# STARLINE

COLLECTION





# STARLINE



STARLINE WHITE  
natural G-7230



STARLINE BLACK  
natural G-7230

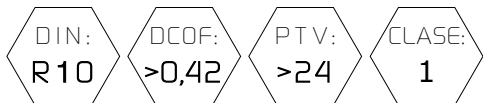


STARLINE BLUE  
natural G-7230



## ANTI-SLIP VALUES

Valores antideslizamiento

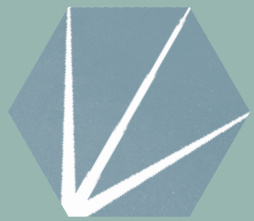


DIN 51130 ANSI A 137.1 BS-7976 UNE-ENV 12633

NON rectified material. Minimum installation joint when fixing is 2 mm.  
Material NO rectificado. Junta mínima para su colocación de 2 mm.



STARLINE Pg.04-09



STARLINE BLUE  
natural G-7230



STARLINE BLACK  
natural G-7230

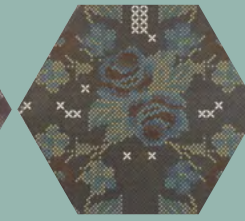


STARLINE WHITE  
natural G-7230

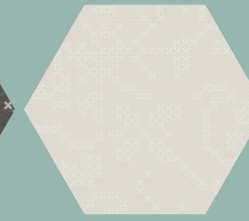
PUNTO CROCE Pg.24-27



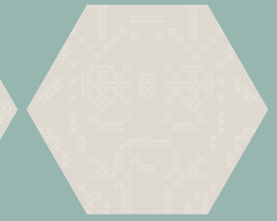
PUNTO CROCE  
BLACK  
decor G-7230



patterns:  
21 mix



PUNTO CROCE  
WHITE  
natural G-7230



patterns:  
21 mix

INTUITION Pg.10-15



INTUITION WHITE  
Natural G-7208



INTUITION WHITE  
1 stamp  
Circle G-7254

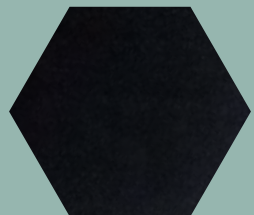


INTUITION WHITE  
1 stamp  
Wave G-7254

ZINC MIX DECOR Pg.28-33



ZINC SILVER  
3 stamps  
Mix decor G-7274



INTUITION BLACK  
Natural G-7208



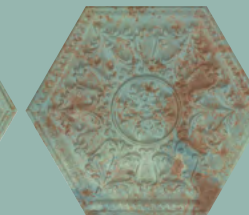
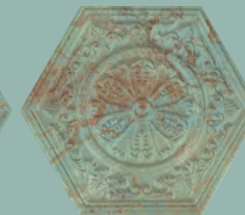
INTUITION BLACK  
1 stamp  
Circle G-7254



INTUITION BLACK  
1 stamp  
Wave G-7254



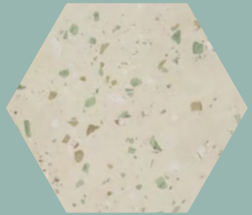
ZINC GREEN  
3 stamps  
Mix decor G-7254



SOUTH Pg.16-23



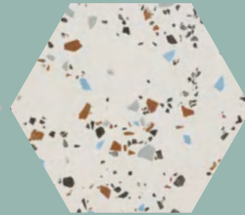
SOUTH PINK  
natural G-7230



SOUTH GREEN  
natural G-7230



SOUTH GREY  
natural G-7230

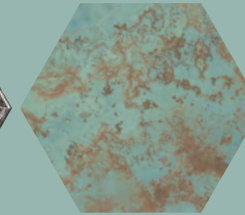


SOUTH WHITE  
natural G-7230

ZINC SINGLE Pg.28-31 ZINC NATURAL Pg.28

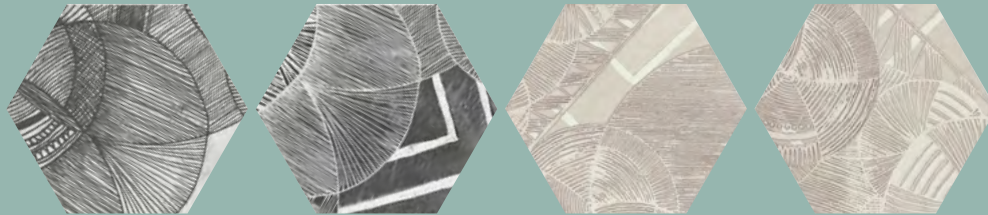


ZINC SILVER  
1 stamp  
SINGLE G-7274



ZINC GREEN  
natural G-7230

## NORTH Pg.34-37



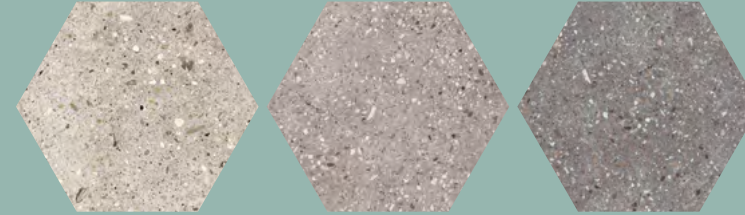
NORTH BLACK  
decor G-7230

patterns:  
32 mix

NORTH SAND  
decor G-7230  
Nonslip G-7254

patterns:  
32 mix

## WIND P.64-71

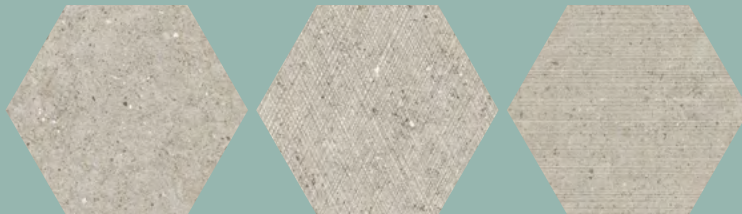


WIND IVORY  
natural G-7230  
Nonslip G-7254

WIND GREY  
natural G-7230  
Nonslip G-7254

WIND MOSS  
natural G-7230

## NANOCONCEPT P.38-41

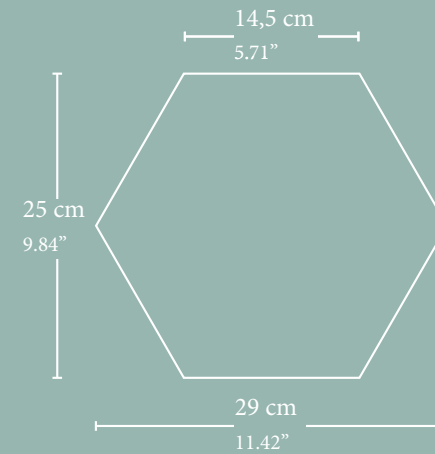


NANOCONCEPT  
GREY Mix G-7230  
Nonslip G-7254

patterns:  
3 decors mix

NANOCONCEPT  
WHITE Mix G-7230  
Nonslip G-7254

patterns:  
3 decors mix



*NON rectified material. Minimum installation joint when fixing is 2 mm.  
Material NO rectificado. Junta mínima para su colocación de 2 mm.*

## ALCHEMY P.46-51



ALCHEMY BLUE  
natural G-7230

ALCHEMY WHITE  
natural G-7230

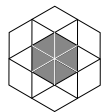
## Packing HEXAGON Lab

SIZE	Size cm		Size "		Box/ Pallet	Pzs/ Box	M2/ Box	M2/ Pallet	SQF/ Box	SQF/ Pallet	Kg/ Pallet	Kg/ Box	Kg/ Piece
	25	29	9,84	11,42									
25x29 Hexagon	25	29	9,84	11,42	48	17	0,935	44,88	10,06	483,09	1060	21,767	1,271

The product may have variations in tone due to the manufacturing process. Ask about specific product before delivery. Photographs may present color variations with respect to the actual product. Ask about specific product before delivery.

El producto puede presentar variaciones de tono derivadas de proceso de fabricación. Realizar consulta de un producto específico antes del suministro.

Las fotografías editadas pueden presentar variaciones cromáticas respecto al producto real. Realizar consulta de un producto específico antes del suministro.



HEXAGON  
LAB

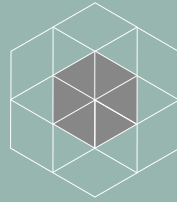
**APAVISIA**  
www.apavisa.com

Ctra. Castellón – San Juan de Moró, hm.7,5  
12130 SAN JUAN DE MORÓ (Castellón) Spain  
Tel. +34 964 701 120 - Export Fax +34 964 701 067 - Fax Nacional 964 701 195  
info@apavisa.com

APAVISIA PORCELANICO S.L. assumes no liability for any printing errors. The technical characteristics contained in this catalog are mean values of our products. To carry out any orders that are requested consultations with the technical characteristics of the particular model to APAVISIA PORCELANICO S.L.

All features and specifications are based on information available at the time of printing this catalog and may be changed without

APAVISIA PORCELANICO S.L. no asume ninguna responsabilidad por posibles errores de impresión. Las características técnicas que constan en el presente catálogo son valores medios de nuestros productos. Para la realización de cualquier pedido se solicita que sean consultadas las características técnicas del modelo en concreto a APAVISIA PORCELANICO S.L. Todas las características y especificaciones técnicas están basadas en la información disponible en el momento de la impresión del presente catálogo y podrán ser modificadas sin previo aviso, de acuerdo a las circunstancias del mercado, innovaciones tecnológicas y/o cualquier otro factor, sin incurrir en ningún tipo de responsabilidad.



HEXAGON  
LAB

**APAVISA**  
[www.apavisa.com](http://www.apavisa.com)

Ctra. Castellón – San Juan de Moró, hm.7,5 - 12130 SAN JUAN DE MORÓ (Castellón) Spain  
Tel. +34 964 701 120 - Export Fax +34 964 701 067 - Fax Nacional 964 701 195 - [info@apavisa.com](mailto:info@apavisa.com)

