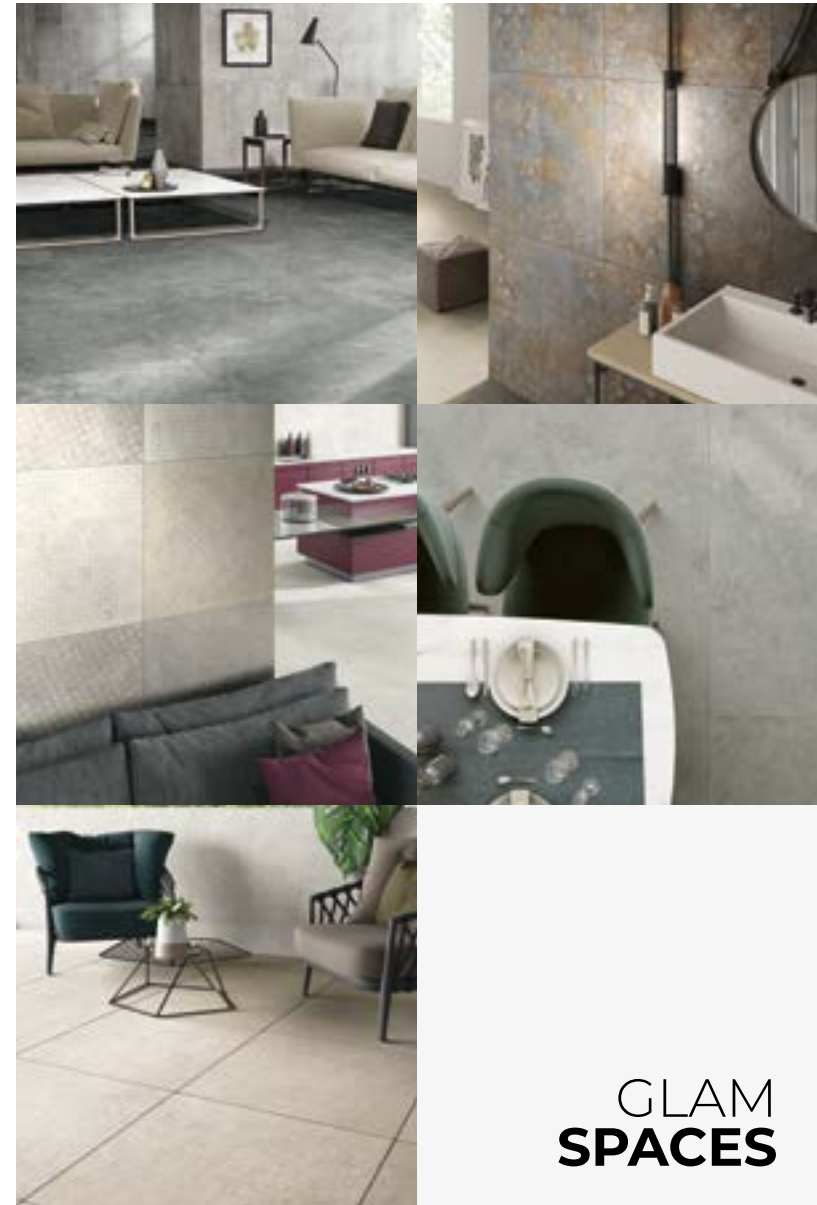


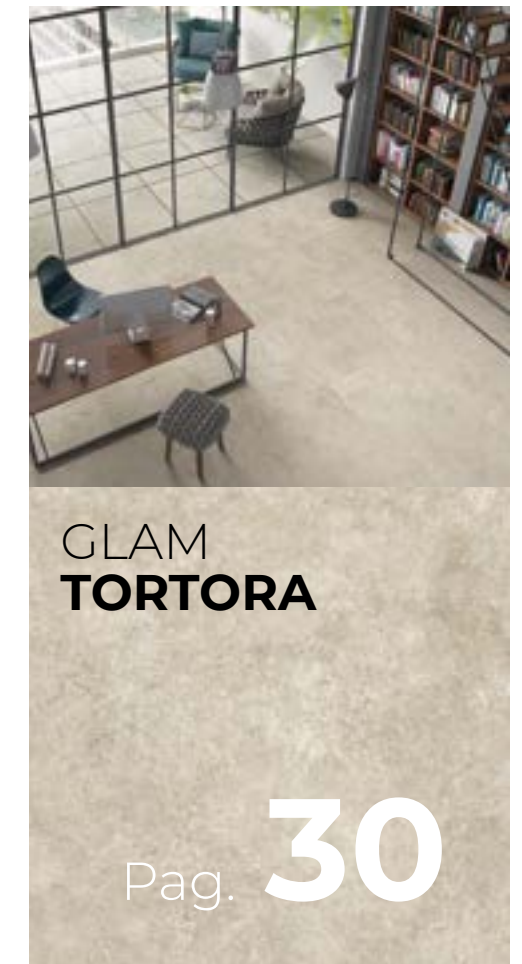
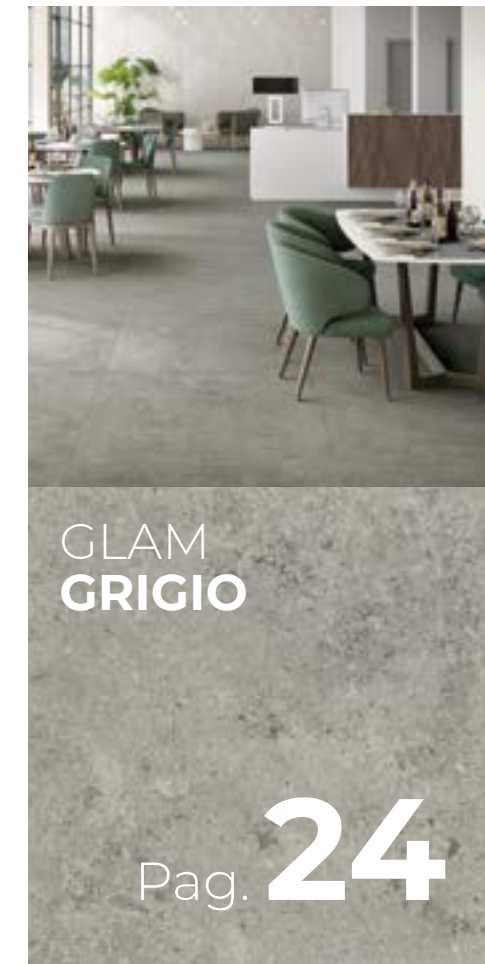
# GLAM

GRES FINE PORCELLANATO



**CENTURY**<sup>®</sup>  
FINCIBEC GROUP





# GLAM SPACES

Gres fine porcellanato  
Fine porcelain stoneware

**Glam è contemporaneità e versatilità di utilizzo.**  
La superficie è quella di una pietra armoniosamente stonalizzata  
in grado di vestire ambienti dalle diverse destinazioni d'uso, dal residenziale al commerciale.  
Alla varietà dei colori - **antracite, beige, bianco, grigio, tortora** -  
si aggiunge quella dei formati: **120x120, 60x120, 80x80, 60x60.**

**Glam is contemporary and versatile.**  
With a stone surface, featuring harmonious variations  
in hue ideal for spaces of all kinds, from residential to commercial.  
Available in a variety of colours - **antracite, beige, bianco, grigio, tortora** -  
and sizes: **120x120, 60x120, 80x80, 60x60.**

# NOUANCE

COLOURS



GLAM **ANTRACITE**

GLAM **BEIGE**

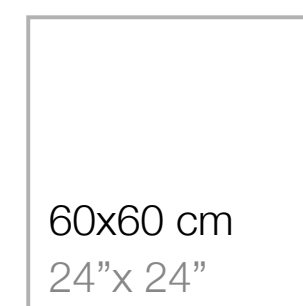
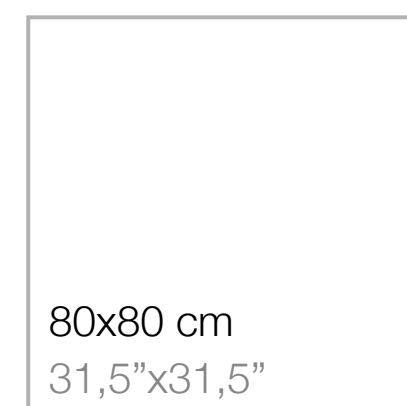
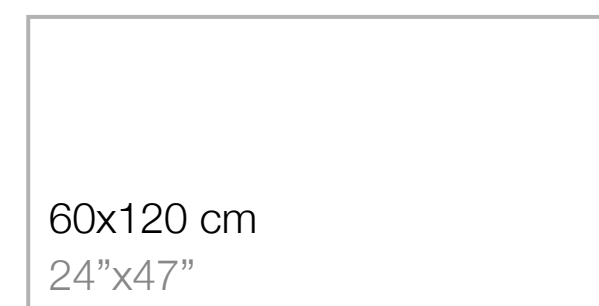
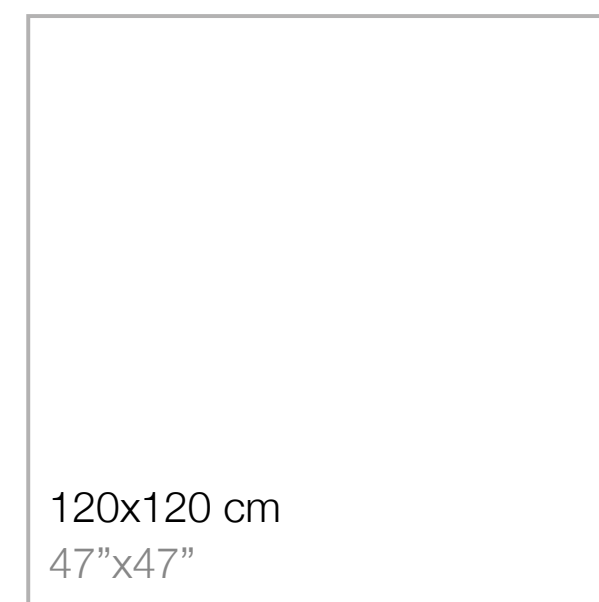
GLAM **BIANCO**

GLAM **GRIGIO**

GLAM **TORTORA**

# FORMATI

SIZES



# SUPERFICI

SURFACES

## FINITURA NATURALE

Natural finish

## FINITURA LAPPATA

Lapped finish

## FINITURA GRIP

Grip finish

Disponibile in 3 colori, un formato e due spessori.  
Available in three colours, one size and two thicknesses.



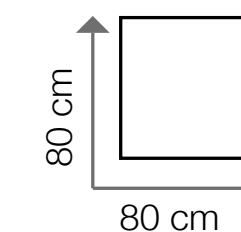
GLAM **BEIGE**



GLAM **GRIGIO**



GLAM **TORTOTA**



**TWO**

h 20 mm

h 9 mm

## BORDO RETTIFICATO

Rectified edge

Gres fine porcellanato  
Fine porcelain stoneware



# GLAM ANTRACITE

Antracite, contemporaneo e lussuoso.  
La tinta, scura e intensa, conferisce profondità  
e ricercatezza agli ambienti.

Anthracite is contemporary and voluptuous,  
a dark, intense hue adding depth and  
refinement to any space.







# GLAM ANTRACITE

Gres fine porcellanato  
Fine porcelain stoneware



# GLAM BEIGE

Beige, delicato, raffinato, capace di conferire alla stanza un tocco di classe e di eleganza.  
Delicate, refined beige adds a touch of class and elegance to the room.







FLOOR  
Glam Beige Nat. 80x80 cm - 31,5"x31,5"

WALL  
Canvas Lapp. 80x80 cm - 31,5"x31,5"



# GLAM BEIGE

Gres fine porcellanato  
Fine porcelain stoneware



# GLAM BIANCO

Bianco, puro, semplice e rilassante.  
Un autentico gioiello che impreziosisce  
l'ambiente, un colore senza tempo.

Pure, simple, relaxing white: a true jewel  
adding value to any space and making it truly  
timeless.





**FLOOR**  
Glam Bianco Nat. 60x120 cm - 24"x 47"

**WALL**  
Glam Bianco Nat. 60x120 cm - 24"x 47"  
Glamour Lapp. 60x60 cm - 24"x 24"



# GLAM BIANCO

Gres fine porcellanato  
Fine porcelain stoneware



# GLAM GRIGIO

Grigio, tinta neutra per eccellenza, la sua raffinatezza permette di creare ambientazioni rilassanti e accoglienti senza rinunciare ad un tocco chic.

The refinement of grey, the most neutral of hues, creates relaxing, cosy spaces with a chic touch.





FLOOR  
Glam Grigio Nat. 120x120 cm - 47"x 47"



# GLAM GRIGIO

Gres fine porcellanato  
Fine porcelain stoneware





# GLAM TORTORA

Tortora, elegante, ricercato e dalla forte personalità. Una tinta neutra adatta ad ogni ambiente in quanto armonioso connubio tra il calore del marrone e la raffinatezza del grigio.

Elegant, refined dove grey has a bold personality. This is a neutral colour well-suited to any kind of space, offering a harmonious combination of the warmth of brown and the refinement of grey.





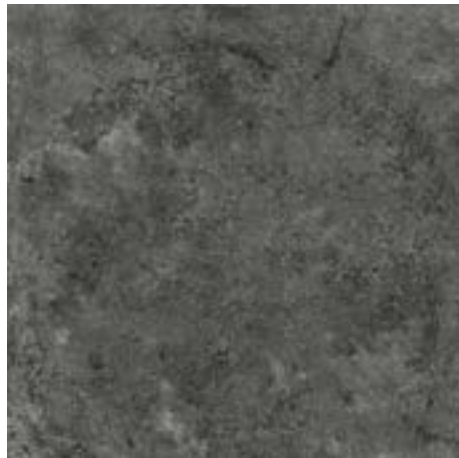
FLOOR  
Glam Tortora Lapp. 80x80 cm - 31,5"x31,5"  
**TWO** Glam Tortora Grip 80x80 cm - 31,5"x31,5"



# GLAM TORTORA

Gres fine porcellanato  
Fine porcelain stoneware

GLAMANTRACITE 9MM



120x120 cm - 47"x 47"  
**112880** Nat. Rett.  
 ■ 148  
**112881** Lapp. Rett.  
 ■ 172



60x120 cm - 24"x 47"  
**112898** Nat. Rett.  
 ■ 117  
**112899** Lapp. Rett.  
 ■ 144



80x80 cm - 31,5"x 31,5"  
**112910** Nat. Rett.  
 ■ 117  
**112911** Lapp. Rett.  
 ■ 144

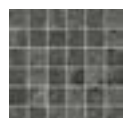


60x60 cm - 24"x 24"  
**112928** Nat. Rett.  
 ■ 100  
**113149** Lapp. Rett.  
 ■ 123

MOSAICI



2,5x2,5 cm - 1"x 1"  
 30x30 cm - 12"x12"  
 su foglio  
**113251** Nat. Rett.  
 ■ 199



4,7x4,7 cm - 1,8"x1,8"  
 30x30 cm - 12"x12"  
 su rete  
**113224** Nat. Rett.  
 ■ 189

GLAMGRIGIO 9MM



120x120 cm - 47"x 47"  
**112877** Nat. Rett.  
 ■ 148  
**112891** Lapp. Rett.  
 ■ 172



60x120 cm - 24"x 47"  
**112896** Nat. Rett.  
 ■ 117  
**112902** Lapp. Rett.  
 ■ 144



80x80 cm - 31,5"x 31,5"  
**112907** Nat. Rett.  
 ■ 117  
**112915** Lapp. Rett.  
 ■ 144  
**112919** Grip Rett.  
 ■ 117



60x60 cm - 24"x 24"  
**112924** Nat. Rett.  
 ■ 100  
**113147** Lapp. Rett.  
 ■ 123

MOSAICI



2,5x2,5 cm - 1"x 1"  
 30x30 cm - 12"x12"  
 su foglio  
**113254** Nat. Rett.  
 ■ 199



4,7x4,7 cm - 1,8"x1,8"  
 30x30 cm - 12"x12"  
 su rete  
**113222** Nat. Rett.  
 ■ 189

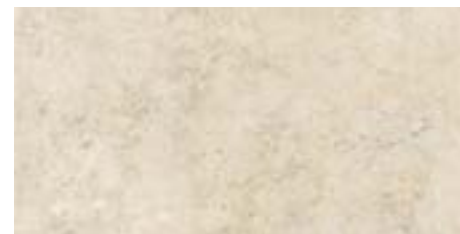


TWO

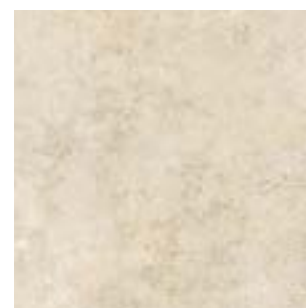
GLAMBEIGE 9MM



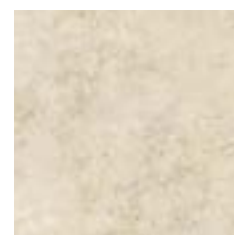
120x120 cm - 47"x 47"  
**112872** Nat. Rett.  
 ■ 148  
**112888** Lapp. Rett.  
 ■ 172



60x120 cm - 24"x 47"  
**112894** Nat. Rett.  
 ■ 117  
**112900** Lapp. Rett.  
 ■ 144



80x80 cm - 31,5"x 31,5"  
**112905** Nat. Rett.  
 ■ 117  
**112912** Lapp. Rett.  
 ■ 144  
**112920** Grip Rett.  
 ■ 117



60x60 cm - 24"x 24"  
**112922** Nat. Rett.  
 ■ 100  
**113145** Lapp. Rett.  
 ■ 123

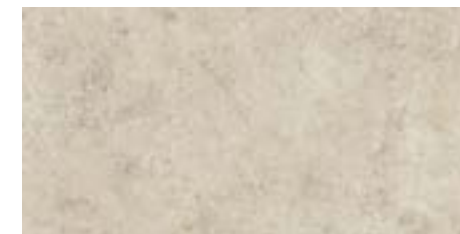


TWO

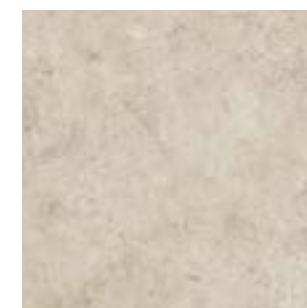
GLAMTORTORA 9MM



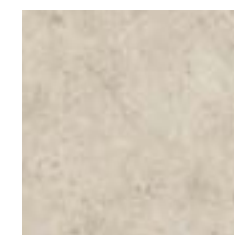
120x120 cm - 47"x 47"  
**112879** Nat. Rett.  
 ■ 148  
**112893** Lapp. Rett.  
 ■ 172



60x120 cm - 24"x 47"  
**112897** Nat. Rett.  
 ■ 117  
**112903** Lapp. Rett.  
 ■ 144



80x80 cm - 31,5"x 31,5"  
**112908** Nat. Rett.  
 ■ 117  
**112917** Lapp. Rett.  
 ■ 144  
**112918** Grip Rett.  
 ■ 117



60x60 cm - 24"x 24"  
**112925** Nat. Rett.  
 ■ 100  
**113148** Lapp. Rett.  
 ■ 123



TWO

MOSAICI



2,5x2,5 cm - 1"x 1"  
 30x30 cm - 12"x12"  
 su foglio  
**113255** Nat. Rett.  
 ■ 199



4,7x4,7 cm - 1,8"x1,8"  
 30x30 cm - 12"x12"  
 su rete  
**113223** Nat. Rett.  
 ■ 189



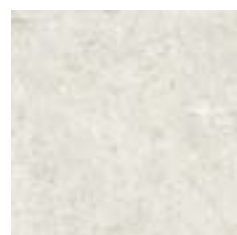
120x120 cm - 47"x 47"  
112876 Nat. Rett.  
● 148  
112889 Lapp. Rett.  
● 172



60x120 cm - 24"x 47"  
112895 Nat. Rett.  
● 117  
112901 Lapp. Rett.  
● 144

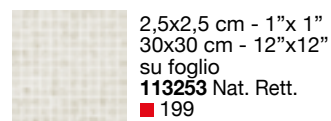


80x80 cm - 31,5"x 31,5"  
112906 Nat. Rett.  
● 117  
112913 Lapp. Rett.  
● 144



60x60 cm - 24"x 24"  
112923 Nat. Rett.  
● 100  
113146 Lapp. Rett.  
● 123

MOSAICI



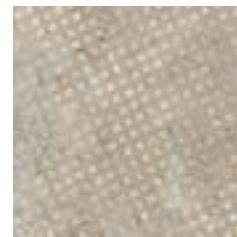
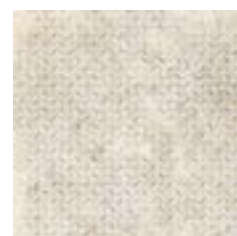
2,5x2,5 cm - 1"x 1"  
30x30 cm - 12"x12"  
su foglio  
113253 Nat. Rett.  
● 199



4,7x4,7 cm - 1,8"x1,8"  
30x30 cm - 12"x12"  
su rete  
113221 Nat. Rett.  
● 189



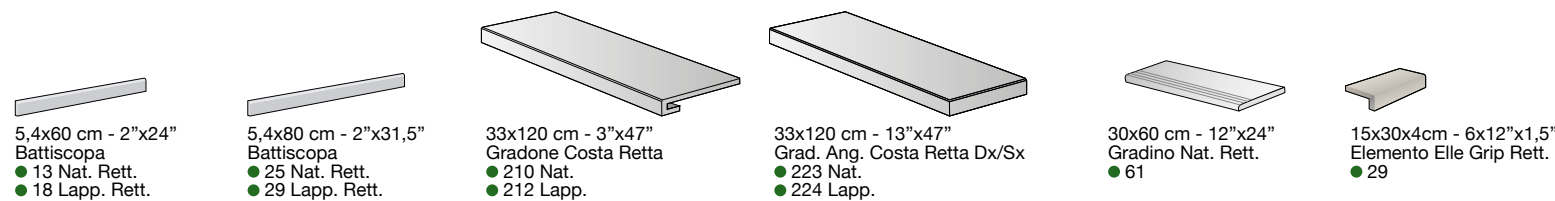
80x80 cm - 31,5"x 31,5"  
\*113182 Canvas Lapp. Rett.  
● 172  
\*113750 Canvas Nat. Rett.  
● 152



60x60 cm - 24"x 24"  
\*113150 Glamour Lapp. Rett.  
● 151

\*Più soggetti, confezionati random.  
Multiple subjects, packaged randomly.

PEZZI SPECIALI - SPECIAL PIECES 9MM



5,4x60 cm - 2"x24"  
Battiscopa  
● 13 Nat. Rett.  
● 18 Lapp. Rett.

5,4x80 cm - 2"x31,5"  
Battiscopa  
● 25 Nat. Rett.  
● 29 Lapp. Rett.

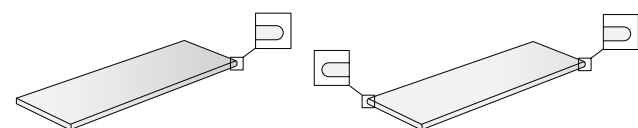
33x120 cm - 3"x47"  
Gradone Costa Retta  
● 210 Nat.  
● 212 Lapp.

33x120 cm - 13"x47"  
Grad. Ang. Costa Retta Dx/Sx  
● 223 Nat.  
● 224 Lapp.

30x60 cm - 12"x24"  
Gradino Nat. Rett.  
● 61

15x30x4cm - 6"x12"x1,5"  
Elemento Elle Grip Rett.  
● 29

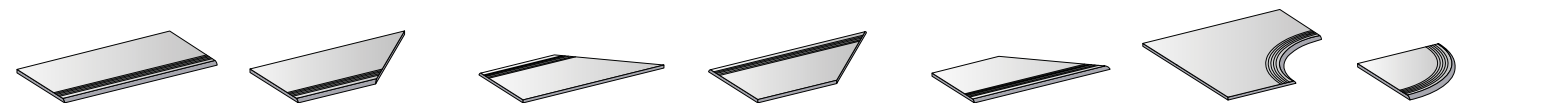
PEZZI SPECIALI - SPECIAL PIECES 20 MM TWO



40x80 cm - 16"x31,5"  
Gradone Con Toro Grip Rett.  
● 192

40x80 cm - 16"x31,5"  
Gradone Angolare Con Toro DX/SX Grip Rett.  
● 209

POOLS&WELLNESS 9MM



40x80 cm - 16"x31,5"  
\*Bordo Line Grip  
● 125

40x80 cm - 16"x31,5"  
Angolo Bordo Line Interno Dx Grip  
● 131

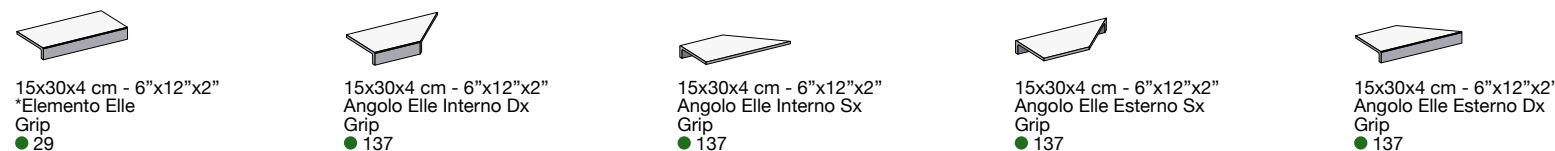
40x80 cm - 16"x31,5"  
Angolo Bordo Line Interno Sx Grip  
● 131

40x80 cm - 16"x31,5"  
Angolo Bordo Line Esterno Sx Grip  
● 131

40x80 cm - 16"x31,5"  
Angolo Bordo Line Esterno Dx Grip  
● 131

80x80 cm - 31,5x31,5"  
Angolo Curvo Line Interno Grip  
● 196

40x40 - 16"x16"  
Angolo Curvo Line Esterno Dx Grip.  
● 187



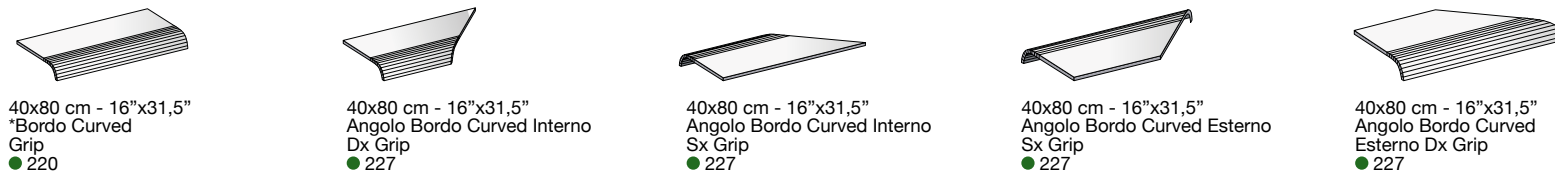
15x30x4 cm - 6"x12"x2"  
\*Elemento Elle Grip  
● 29

15x30x4 cm - 6"x12"x2"  
Angolo Elle Interno Dx Grip  
● 137

15x30x4 cm - 6"x12"x2"  
Angolo Elle Interno Sx Grip  
● 137

15x30x4 cm - 6"x12"x2"  
Angolo Elle Esterno Sx Grip  
● 137

15x30x4 cm - 6"x12"x2"  
Angolo Elle Esterno Dx Grip  
● 137



40x80 cm - 16"x31,5"  
\*Bordo Curved Grip  
● 220

40x80 cm - 16"x31,5"  
Angolo Bordo Curved Interno Dx Grip  
● 227

40x80 cm - 16"x31,5"  
Angolo Bordo Curved Interno Sx Grip  
● 227

40x80 cm - 16"x31,5"  
Angolo Bordo Curved Esterno Sx Grip  
● 227

40x80 cm - 16"x31,5"  
Angolo Bordo Curved Esterno Dx Grip  
● 227



20x80 cm - 8"x31,5"  
\*Griglia Hole 9+9 mm Grip  
● 202

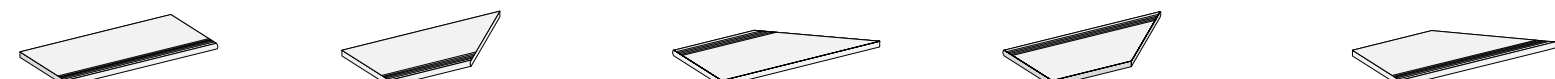
20x80 cm - 8"x31,5"  
Angolo Griglia Hole Double Face 9+9 mm Grip  
● 205

20x80 cm - 8"x31,5"  
Griglia Slot 9+9 mm Grip  
● 198

20x80 cm - 8"x31,5"  
Angolo Griglia Slot Dx 9+9 mm Grip  
● 202

20x80 cm - 8"x31,5"  
Angolo Griglia Slot Sx 9+9 mm Grip  
● 202

POOLS&WELLNESS 20 MM TWO



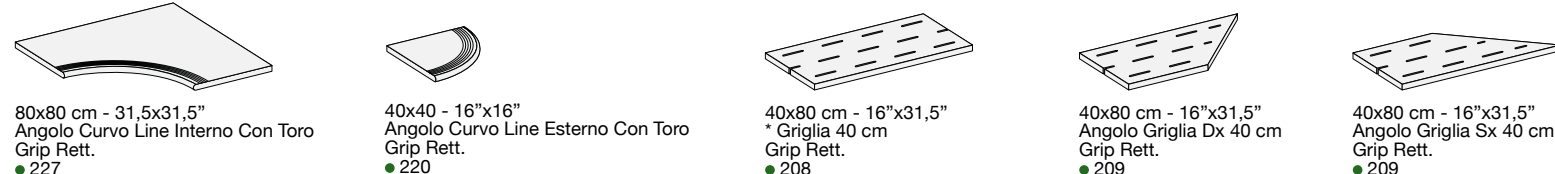
40x80 cm - 16"x31,5"  
\* Bordo Line rettilineo con toro Grip Rett.  
● 196

40x80 cm - 16"x31,5"  
Angolo Line interno con toro Dx Grip Rett.  
● 199

40x80 cm - 16"x31,5"  
Angolo Line interno con toro Sx Grip Rett.  
● 199

40x80 cm - 16"x31,5"  
Angolo Line esterno con toro Sx Grip Rett.  
● 199

40x80 cm - 16"x31,5"  
Angolo Line esterno con toro Dx Grip Rett.  
● 199



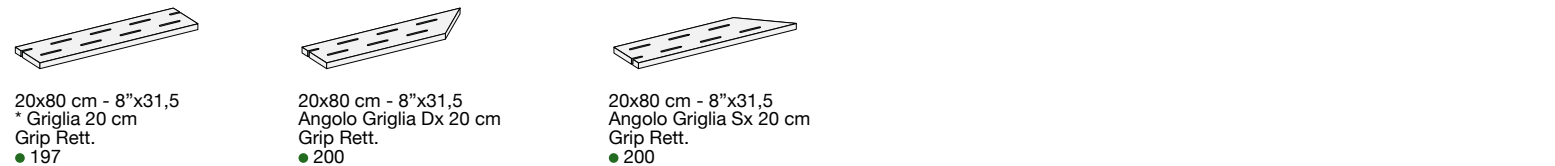
80x80 cm - 31,5x31,5"  
Angolo Curvo Line Interno Con Toro Grip Rett.  
● 227

40x40 - 16"x16"  
Angolo Curvo Line Esterno Con Toro Grip Rett.  
● 220

40x80 cm - 16"x31,5"  
\* Griglia 40 cm Grip Rett.  
● 208

40x80 cm - 16"x31,5"  
Angolo Griglia Dx 40 cm Grip Rett.  
● 209

40x80 cm - 16"x31,5"  
Angolo Griglia Sx 40 cm Grip Rett.  
● 209



20x80 cm - 8"x31,5"  
\* Griglia 20 cm Grip Rett.  
● 197

20x80 cm - 8"x31,5"  
Angolo Griglia Dx 20 cm Grip Rett.  
● 200

20x80 cm - 8"x31,5"  
Angolo Griglia Sx 20 cm Grip Rett.  
● 200

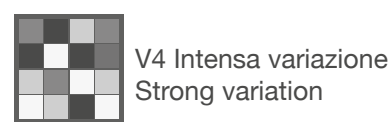
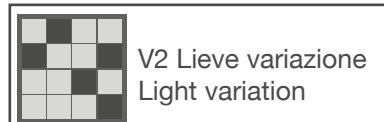
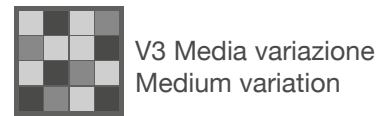
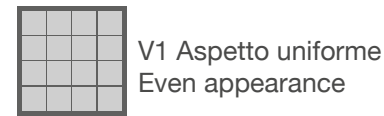
\*Prezzo per ordine minimo di 20 pz. Per quantitativi inferiori, rivolgersi agli uffici commerciali per una quantificazione specifica. \*Price for a minimum order of 20 items. For smaller volumes, please contact our commercial office for a specific quote.

## IMBALLI - PACKAGING

	120x120 cm 47"x47"	NAT. 60x120 cm 24"x47"	LAPP. 60x120 cm 24"x47"	NAT./GRIP 80x80 cm 31,5"x31,5"	LAPP. 80x80 cm 31,5"x31,5"	TWO 80x80 cm 31,5"x31,5"	60x60 cm 24"x 24"
Pc.	2	2	2	2	3	1	3
M²	2,88	1,44	1,44	1,28	1,28	0,64	1,08
Kg	58	31	30,5	26,2	25,5	29	22,5

	120x120 cm 47"x47"	60x120 cm 24"x47"	60x120 cm 24"x47"	80x80 cm 31,5"x31,5"	80x80 cm 31,5"x31,5"	TWO 80x80 cm 31,5"x31,5"	60x60 cm 24"x 24"
Pc.	20	35	35	40	40	40	40
M²	57,6	50,4	50,4	51,2	51,2	25,6	43,2
Kg	1160	1085	1067	1048	1020	1160	900

## VARIAZIONI CROMATICHE - COLOURS VARIATIONS



È indispensabile all'atto della posa, prelevare le piastrelle da più confezioni.

It is necessary to take the tiles from several different boxes when laying them.

## CATEGORIE D'IMPIEGO - USE CLASSES

**C1** Piastrelle da pavimento consigliate per calpestio lieve.  
Floor tiles recommended for low passage areas.

**C4** Lapp.  
Piastrelle da pavimento consigliate per calpestio medio.  
Floor tiles recommended for medium traffic areas.

**C2** Piastrelle da pavimento consigliate per calpestio leggero.  
Floor tiles recommended for light traffic areas.

**C5** Grip e Nat.  
Piastrelle da pavimento consigliate per calpestio intenso.  
Floor tiles recommended for heavy uses.

**C3** Piastrelle da pavimento consigliate per calpestio medio leggero.  
Floor tiles recommended for medium light traffic areas.

**NOTE - NOTES**  
I prodotti possono essere modificati da Fincibec senza preavviso, respingendo ogni responsabilità su possibili danni diretti o indiretti causati da potenziali modifiche.  
Fincibec reserves the right to modify its products without prior notice and cannot be held liable for direct or indirect damage caused by such modifications.

Verificare sempre la correttezza delle informazioni e dei dati relativi a codici, imballaggi e pesi, consultando il listino prezzi in vigore.  
Always refer to the price list in force to ensure correct information and data on codes, packaging, and weight.

Le tonalità dei colori riportate nel catalogo sono indicative.  
The colours shades, reported on the catalogue, are indicative.

## CARATTERISTICHE TECNICHE / GRES FINE PORCELLANATO COLORATO IN MASSA

TECHNICAL SPECIFICATIONS / FULL-BODY COLOURED PORCELAIN STONeware - TECHNISCHE EIGENSCHAFTEN / DURCHFARFBITES FEINSTEINZEUG - CARACTÉRISTIQUES TECHNIQUES / GRÉS FIN CERAME COLORÉ EN MASSE - CARACTERÍSTICAS TÉCNICAS / GRES FINO PORCELÁNICO TENIDO EN MASA - ТЕХНИЧЕСКИЕ ХАРАКТЕРИСТИКИ / МЕЛКОЗЕРНИСТЫЙ КЕРАМОГРАНИТ, ОКРАШЕННЫЙ В МАССЕ

STANDARDS : UNI EN 14411 ANNEX G - Bla / UNI EN ISO 13006 ANNEX G - Bla

	CARATTERISTICHE TECNICHE TECHNICAL DATA TECHNISCHE DATEN CARACTÉRISTIQUES TECHNIQUES CARACTERÍSTICAS TÉCNICAS ТЕХНИЧЕСКИЕ ХАРАКТЕРИСТИКИ	TIPO DI PROVA STANDARD OF TEST NORME DU TEST TESTNORM TIPO DE PRUEBA ТИП ТЕСТА	VALORI PRESCRITTI DALLE NORME INTERNATIONAL STANDARDS INTERNATIONALE NORMWERTE VALEURS PREVUES PAR LES NORMES VALORES PREVISTOS POR LAS NORMAS ПРЕДУСМОТРЕННЫЕ СТАНДАРТОМ		VALORE MEDIO CENTURY CENTURY AVERAGE VALUE CENTURY MITTELWERT VALEUR MOYENNE CENTURY VALOR MEDIO CENTURY СРЕДНЕЗНАЧЕНИЕ CENTURY		
			REQUIREMENTS FOR NOMINAL SIZE		NAT	LAPP	GRIP
			7 cm ≤ N ≤ 15 cm	N ≥ 15 cm			
	LATI SIDES - SEITEN COTES - CANTOS РАЗМЕРЫ СТОРОН	EN ISO 10545-2	± 0,9 mm	± 0,6% (± 2,0 mm)	CONFORME COMPLYING - ERFÜLLT CONFORME - CONFORME COOTBETCTBYET		
	SPESSORE THICKNESS - DICKE ÉPAISSEUR - ESPESOR ТОЛЩИНА	EN ISO 10545-2	± 0,5 mm	± 5,0% (± 0,5 mm)	CONFORME COMPLYING - ERFÜLLT CONFORME - CONFORME COOTBETCTBYET		
	RETTILINEITÀ DEGLI SPIGOLI STRAIGHTNESS OF SIDES - GERADLINIGKEIT DER KANTEN RECTITUDE DES ARÊTES - RECTITUD DE LOS CANTOS - ИСОУГОЛЬНОСТЬ	EN ISO 10545-2	± 0,75 mm	± 0,5% (± 1,5 mm)	CONFORME COMPLYING - ERFÜLLT CONFORME - CONFORME COOTBETCTBYET		
	ORTOGONALITÀ RECTANGULARITY - RECHTWINKLIKHEIT PERPENDICULARITÉ - ORTOGONALIDAD КРИВИЗНА СТОРОН	EN ISO 10545-2	± 0,75 mm	± 0,5% (± 2 mm)	CONFORME COMPLYING - ERFÜLLT CONFORME - CONFORME COOTBETCTBYET		
	PLANARITÀ SURFACE FLATNESS - EBENFLÄCHIGKEIT PLANEITE DE SURFACE - PLANEIDAD КРИВИЗНА ПЛАНЕВОЙ ПОВЕРХНОСТИ	EN ISO 10545-2	± 0,75 mm	± 0,5% (± 2,0 mm)	CONFORME COMPLYING - ERFÜLLT CONFORME - CONFORME COOTBETCTBYET		
	ASSORBIMENTO D'ACQUA WATER ABSORPTION - WASSERANNAHME ABSORPTION D'EAU - ABSORCIÓN DE AGUA ВОДОПОТЛОЩЕНИЕ	EN ISO 10545-3	≤ 0,5%		≤ 0,1%		
	RESISTENZA ALLA FLESSIONE FLEXION RESISTANCE - BIEGEFESTIGKEIT RESISTANCE A LA FLEXION - RESISTENCIA A LA FLEXIÓN ПРЕДЕЛ ПРОЧНОСТИ ПРИ ИЗГИБЕ	EN ISO 10545-4	S ≥ 1.300 N R ≥ 35 N/mm <sup>2</sup>		CONFORME COMPLYING - ERFÜLLT CONFORME - CONFORME COOTBETCTBYET		
	RESISTENZA ALL'URTO IMPACT RESISTANCE - STOSSEFESTIGKEIT RESISTANCE AUX CHOCOS - RESISTENCIA A LOS GOLPES УДАРООСТОЙКОСТЬ	EN ISO 10545-5	VALORE DICHIARATO DECLARED VALUE - ANGELEGEBENER WERT VALEUR DÉCLARÉE - VALOR DECLARADO - ЗАЯВЛЕННОЕ ЗНАЧЕНИЕ		> 0,80		
	COEFFICIENTE DI DILATAZIONE TERMICA LINEARE COEFFICIENT OF LINEAR THERMAL EXPANSION - LINEARER WÄRMEAUSSDEHNKOEFFIZIENT COEFFICIENT DE DILATATION THERMIQUE LINEAIRE - COEFFICIENTE DE DILATACIÓN TÉRMICA LINEAL КОЭФФИЦИЕНТ ЛИНЕЙНОГО ТЕРМИЧЕСКОГО РАСТЯЖЕНИЯ	EN ISO 10545-8	VALORE DICHIARATO DECLARED VALUE - ANGELEGEBENER WERT VALEUR DÉCLARÉE - VALOR DECLARADO - ЗАЯВЛЕННОЕ ЗНАЧЕНИЕ		α = 6,7x10 <sup>-6</sup> /°C		
	RESISTENZA AGLI SBALZI TERMICI RESISTANCE TO THERMAL SHOCKS - BESTÄNDIGKEIT GEGEN TEMPERATURSCHWANKUNGEN RESISTANCE AUX CHOCOS THERMIQUES - RESISTENCIA A LOS CHOQUES TÉRMICOS СТОЙКОСТЬ К ПЕРЕПАДАМ ТЕМПЕРАТУРЫ	EN ISO 10545-9	TEST SUPERATO SECONDO EN ISO 10545-1 TEST PASSED ACCORDING TO - TEST BESTANDEN NACH TEXTE DÉPASSÉ SELON - PRUEBA SUPERADA SEGUN ИСПЫТАНИЕ ПРОЙДЕНО В СООТВЕТСТВИИ С		NESSUN DANNO NO DAMAGE - KEIN SCHADEN AUCUN DOMMAGE - NINGUN DANO БЕЗ ПОРЯДКЕДИЙ		
	DILATAZIONE ALL'UMIDITÀ (IN MMM) MOISTURE EXPANSION (IN MMM) - FEUCHTIGKEITSBEDINGTE AUSDEHNUNG (IN MMM) DILATATION À L'HUMIDITÉ (EN MMM) - DILATACIÓN CON LA HUMEDAD (EN MMM) ВЛАЖНОСТНОЕ РАСТЯЖЕНИЕ (В MMM)	EN ISO 10545-10	VALORE DICHIARATO DECLARED VALUE - ANGELEGEBENER WERT VALEUR DÉCLARÉE - VALOR DECLARADO - ЗАЯВЛЕННОЕ ЗНАЧЕНИЕ		MAX 0,1 mm/m		
	RESISTENZA AL GELO FROST RESISTANCE - FROSTBESTÄNDIGKEIT RESISTENCIA AL GEL - RESISTENCIA AL HIELO МОРОЗОСТОЙКОСТЬ	EN ISO 10545-12	TEST SUPERATO SECONDO EN ISO 10545-1 TEST PASSED ACCORDING TO - TEST BESTANDEN NACH TEXTE DÉPASSÉ SELON - PRUEBA SUPERADA SEGUN ИСПЫТАНИЕ ПРОЙДЕНО В СООТВЕТСТВИИ С		NESSUN DANNO NO DAMAGE - KEIN SCHADEN AUCUN DOMMAGE - NINGUN DANO БЕЗ ПОРЯДКЕДИЙ		
	RESISTENZA AI PRODOTTI CHIMICI USO DOMESTICO E ADDITIVI PER PISCINA RESISTANCE TO HOUSEHOLD AND SWIMMING POOL CHEMICAL PRODUCTS - BESTÄNDIGKEIT GEGEN HAUSHALTS-CHEMISCHEN UND ZUSATZSTOFFE FÜR SWIMMINGPOOLS - RESISTANCE AUX PRODUITS CHIMIQUES USAGE DOMESTIQUE ET ADDITIFS POUR PISCINE - RESISTENCIA A LOS PRODUCTOS QUÍMICOS DE USO DOMESTICO Y ADITIVOS PARA PISCINA - СТОЙКОСТЬ К ДЕЙСТВУЮ ВЫТОВАЖИХИМИЧЕСКИХ СРЕДСТВ, ДРОБАВКАМ В БАССЕЙНЫ	EN ISO 10545-13	B MIN		CONFORME COMPLYING - ERFÜLLT CONFORME - CONFORME COOTBETCTBYET		
	RESISTENZA A BASSE CONCENTRAZIONI DI ACIDI E ALCALI RESISTANCE TO LOW CONCENTRATIONS OF ACIDS AND ALKALI - BESTÄNDIGKEIT BEI NIEDRIGEN KONZENTRATIONEN VON SAUREN UND LAUGEN - RESISTANCE A BASSES CONCENTRATIONS D'ACIDES ET ALCALIS - RESISTENCIA A BAJAS CONCENTRACIONES DE ÁCIDOS Y ALCALIS - СТОЙКОСТЬ К ДЕЙСТВУЮ НАЗКИХ КОНЦЕНТРАЦИЙ КИСЛОТ И ЩЕЛОЧЕЙ	EN ISO 10545-13	VALORE DICHIARATO DECLARED VALUE - ANGELEGEBENER WERT VALEUR DÉCLARÉE - VALOR DECLARADO - ЗАЯВЛЕННОЕ ЗНАЧЕНИЕ		CONFORME COMPLYING - ERFÜLLT CONFORME - CONFORME COOTBETCTBYET		
	RESISTENZA AD ALTE CONCENTRAZIONI DI ACIDI E ALCALI RESISTANCE TO HIGH CONCENTRATIONS OF ACIDS AND ALKALI - BESTÄNDIGKEIT BEI HOHEN KONZENTRATIONEN VON SAUREN UND LAUGEN - RESISTANCE À HAUTES CONCENTRATIONS D'ACIDES ET ALCALIS - RESISTENCIA A ALTAS CONCENTRACIONES DE ÁCIDOS Y ALCALIS - СТОЙКОСТЬ К ДЕЙСТВУЮ ВЫСОКИХ КОНЦЕНТРАЦИЙ КИСЛОТ И ЩЕЛОЧЕЙ	EN ISO 10545-13	VALORE DICHIARATO DECLARED VALUE - ANGELEGEBENER WERT VALEUR DÉCLARÉE - VALOR DECLARADO - ЗАЯВЛЕННОЕ ЗНАЧЕНИЕ		CONFORME COMPLYING - ERFÜLLT CONFORME - CONFORME COOTBETCTBYET		
	RESISTENZA ALLE MACCHIE RESISTANCE TO STAINS - FLECKENBESTÄNDIGKEIT RESISTANCE AUX TACHES - RESISTENCIA A LAS MANCHAS УСТОЙЧИВОСТЬ К ПЯТНООБРАЗОВАНИЮ	EN ISO 10545-14	VALORE DICHIARATO DECLARED VALUE - ANGELEGEBENER WERT VALEUR DÉCLARÉE - VALOR DECLARADO - ЗАЯВЛЕННОЕ ЗНАЧЕНИЕ		CONFORME COMPLYING - ERFÜLLT CONFORME - CONFORME COOTBETCTBYET		
	CESSIONE DI PIOMBO E CADMIO LEAD AND CADMIUM DISCHARGE - ABGABE VON BLEI UND CADMIUM PERTE DE PLOMB ET CADMIUM - CESSIÓN DE PLOMO Y CADMIO ВЫДЕЛЕНИЕ СВИНЦА И КАДМИЯ	EN ISO 10545-15	VALORE DICHIARATO DECLARED VALUE - ANGELEGEBENER WERT VALEUR DÉCLARÉE - VALOR DECLARADO - ЗАЯВЛЕННОЕ ЗНАЧЕНИЕ		< LIMITE DI RILEVAMENTO < THAN INSTRUMENT LIMIT - < LIMITE DE RELEVEMENT < LIMITE DE INSTRUMENT - LIMITE DEL INSTRUMENTO < НА ПРЕДЕЛЕ ОПРЕДЕЛИМОСТИ		
	SCIVOLosità SKID RESISTANCE - RUTSCHWERT GLISSANCE - ADHERENCIA СКОЛЬЗКОСТЬ	DM 23689 BCRA ANSI A 137.1 DIN 51130 DIN 51097	> 0,40 WET COEF > 0,42 -	> 0,40 > 0,42 -	> 0,40 > 0,42 R10 A+B Mos 4,7 A+B+C Mos 2,5	- - - -	> 0,40 > 0,42 R11 A+B+C

PER I CERTIFICATI SPECIFICI, E VALORI PUNTUALI, CONTATTARE FINCIBEC SPA - FOR SPECIFIC CERTIFICATES AND DATA, CONTACT FINCIBEC S.P.A. - FÜR SPEZIELLE ZERTIFIKATE UND PUNKTWERTE, FINCIBEC S.P.A. KONTAKTIEREN - POUR LES CERTIFICATS SPÉCIFIQUES ET LES VALEURS PONCTUELLES, CONTACTER FINCIBEC S.P.A. - PARA LOS CERTIFICADOS ESPECIFICOS Y LOS VALORES CONCRETOS, CONTACTE CON FINCIBEC S.P.A. - ВО ВОПРОСАХ СПЕЦИАЛЬНЫХ СЕРТИФИКАТОВ И ПОКАЗАТЕЛЕЙ СВЯЖИТЕСЬ С FINCIBEC SPA.  
ESCLUSO PEZZI SPECIALI ED ELEMENTI DECORATIVI  
WITH THE EXCEPTION OF SPECIAL PIECES AND DECORS - A L'EXCEPTION DE PIÈCES SPÉCIALES ET ÉLÉMENTS DÉCORATIFS - AUSSCHLIEßLICH FORMSTÜCKE UND DEKORTEILE - EXCLUIDO PIEZAS ESPECIALES Y ELEMENTOS DECORATIVOS



**CENTURY**

Via Radici in Monte, 18/19 - 42014 Roteglia (RE) Italy  
Tel. +39 0536 855511  
Fax Italia +39 0536 851239  
Fax Export Dept. +39 0536 855541  
info@century-ceramica.it  
www.century-ceramica.it

**FINCIBEC S.p.A.**

Sede legale: Via Valle d'Aosta, 47 - 41049 - Sassuolo (Mo) Italy  
Gruppo Fire S.R.L.

---

**FINCIBEC USA Inc.**

420 Columbus Avenue, Valhalla NY 10595 – USA  
info@fincibecusa.com

FINCIBEC S.p.A. socio di:

