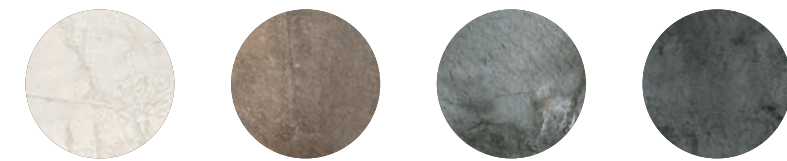


CLIMB

SFUMATURE CROMATICHE PROFONDE

DEEP VARIATIONS IN COLOUR
PROFONDS DÉGRADÉS DE COULEUR
DIE SATTEN FARBABSTUFUNGEN



Gres porcellanato a tutta massa | Through-body porcelain tile | Durchgefärbtes Feinsteinzeug | Grès cérame pleine masse



Pavimento/Floor: HCL 10 Rett.







Rivestimento/Wall: HCL 9 - Mosaico HCL 9 | Pavimento/Floor: HCL 5 - Mosaico HCL 5



Rivestimento/Wall: HCL 9 - Mosaico HCL 9 | Pavimento/Floor: Mosaico HCL 5





Rivestimento/Wall: Tredi / HCL 8



Rivestimento/Wall: HCL 8 - Fourmix HCL 8 | Pavimento/Floor: HCL 5

Climb

80x80 40x80 60x60 30x60



80x80 . 32"x32"



40x80 . 16"x32"



60x60 . 24"x24"



30x60 . 12"x24"

Gres porcellanato a tutta massa
Through-body porcelain tile
Durchgefärbtes Feinsteinzeug
Le grès cérame pleine masse
Gruppo Bla UNI EN 14411_G



RANDOM



8,5 mm



UN EN ISO 10545.12:
RESISTANT



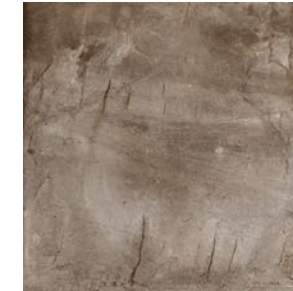
UNI EN ISO 10545.13: **GA**
UNI EN ISO 10545.14: **5**



DIN 51130: **R10 - R12 (Grip)**
DIN 51097: **B - C (Grip)**
ANSI A326.3: 2017 Release 2019
(DCOF): **≥0,42**
BCRA: **>0,40**



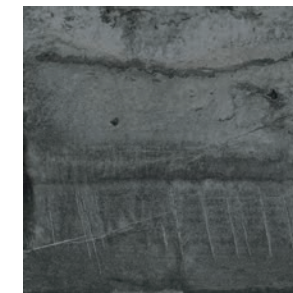
HCL 10 Bianco



HCL 9 Noce



HCL 5 Grigio



HCL 8 Nero



Sizes	Pieces	Mq.	Kg.	Boxes	Mq.	Kg.
80x80	2	1,28	25,15	44	56,32	1126,69
40x80	3	0,96	18,86	28	26,88	548,19
60x60	4	1,44	25,00	40	57,60	1020,00
30x60	7	1,26	24,76	40	50,40	1010,36
30x30 mosaico	6	0,54	-	-	-	-
30x60 fourmix	4	0,72	-	-	-	-
30x60 tredi	4	0,72	-	-	-	-
7,5x60 battiscopa	14	8,40 ml.	-	-	-	-
7x80 battiscopa	10	8,00 ml.	-	-	-	-
33x60 gradone lineare	4	-	-	-	-	-
33x80 gradone lineare	2	-	-	-	-	-
33x33 gradone angolare	2	-	-	-	-	-

Climb

80x80 40x80 60x60 30x60

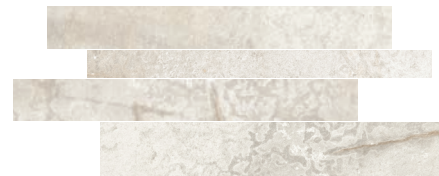
Bianco



80x80 . 32"x32"
GTCL10RJ HCL 10 Rett.



40x80 . 16"x32"
GOCL10RJ HCL 10 Rett.



30x60 . 12"x24"
G8CL10MUF Fourmix HCL 10



30x60 . 12"x24"
G8CL10MUT Tredi HCL 10



60x60 . 24"x24"
G9CL10J HCL 10



30x60 . 12"x24"
G8CL10J HCL 10



30x60 . 12"x24"
G8CL10GRIJ HCL 10 Grip



30x30 . 12"x12"
G3CL10MO Mosaico HCL 10

PEZZI SPECIALI • SPECIAL PIECES • FORMTEILE • PIÈCES SPÉCIALES



7,5x60 . 3"x24"
BATTISCOPA
GOCL10B60 HCL 10



7x80 . 2⁶/₈"x32"
BATTISCOPA
GOCL10R80 HCL 10 Rett.



33x60 . 13"x24"
GRADONE LINEARE
G3CL10G HCL 10

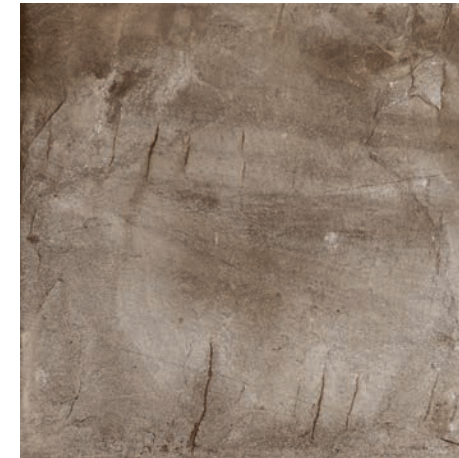


33x80 . 13"x32"
GRADONE LINEARE
G3CL10RG HCL 10 Rett.



33x33 . 13"x13"
GRADONE ANGOLARE
G3CL10GA HCL 10
G3CL10RGA HCL 10 Rett.

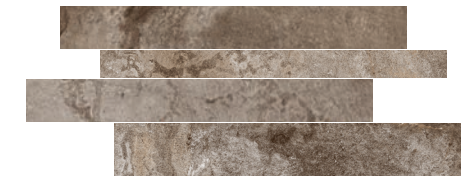
Noce



80x80 . 32"x32"
GTCL09RJ HCL 9 Rett.



40x80 . 16"x32"
GOCL09RJ HCL 9 Rett.



30x60 . 12"x24"
G8CL09MUF Fourmix HCL 9



30x60 . 12"x24"
G8CL09MUT Tredi HCL 9



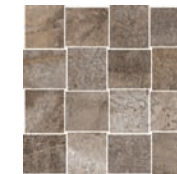
60x60 . 24"x24"
G9CL09J HCL 9



30x60 . 12"x24"
G8CL09J HCL 9



30x60 . 12"x24"
G8CL09GRIJ HCL 9 Grip



30x30 . 12"x12"
G3CL09MO Mosaico HCL 9

PEZZI SPECIALI • SPECIAL PIECES • FORMTEILE • PIÈCES SPÉCIALES



7,5x60 . 3"x24"
BATTISCOPA
GOCL09B60 HCL 9



7x80 . 2⁶/₈"x32"
BATTISCOPA
GOCL09R80 HCL 9 Rett.



33x60 . 13"x24"
GRADONE LINEARE
G3CL09G HCL 9



33x80 . 13"x32"
GRADONE LINEARE
G3CL09RG HCL 9 Rett.



33x33 . 13"x13"
GRADONE ANGOLARE
G3CL09GA HCL 9
G3CL09RGA HCL 9 Rett.

Climb

80x80 40x80 60x60 30x60

Grigio



80x80 . 32"x32"
GTCL05RJ HCL 5 Rett.



40x80 . 16"x32"
GOCL05RJ HCL 5 Rett.



30x60 . 12"x24"
G8CL05MUF Fourmix HCL 5

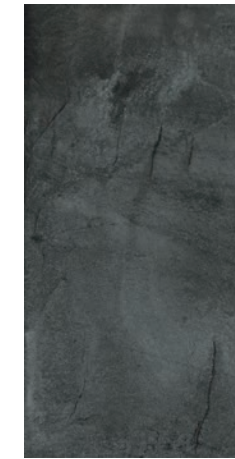


30x60 . 12"x24"
G8CL05MUT Tredi HCL 5

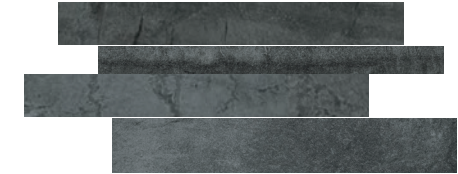
Nero



80x80 . 32"x32"
GTCL08RJ HCL 8 Rett.



40x80 . 16"x32"
GOCL08RJ HCL 8 Rett.



30x60 . 12"x24"
G8CL08MUF Fourmix HCL 8



30x60 . 12"x24"
G8CL08MUT Tredi HCL 8



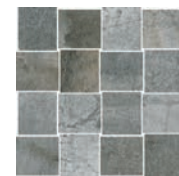
60x60 . 24"x24"
G9CL05J HCL 5



30x60 . 12"x24"
G8CL05J HCL 5



30x60 . 12"x24"
G8CL05GRIJ HCL 5 Grip



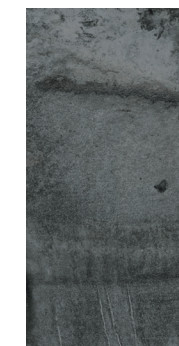
30x30 . 12"x12"
G3CL05MO Mosaico HCL 5



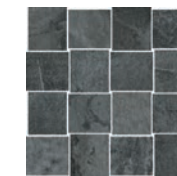
60x60 . 24"x24"
G9CL08J HCL 8



30x60 . 12"x24"
G8CL08J HCL 8



30x60 . 12"x24"
G8CL08GRIJ HCL 8 Grip



30x30 . 12"x12"
G3CL08MO Mosaico HCL 8

PEZZI SPECIALI • SPECIAL PIECES • FORMTEILE • PIÈCES SPÉCIALES



7,5x60 . 3"x24"
BATTISCOPA
GOCL05B60 HCL 5



7x80 . 2^{6/8}"x32"
BATTISCOPA
GOCL05R80 HCL 5 Rett.



33x60 . 13"x24"
GRADONE LINEARE
G3CL05G HCL 5



33x80 . 13"x32"
GRADONE LINEARE
G3CL05RG HCL 5 Rett.



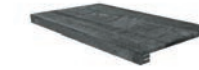
33x33 . 13"x13"
GRADONE ANGOLARE
G3CL05GA HCL 5
G3CL05RGA HCL 5 Rett.



7,5x60 . 3"x24"
BATTISCOPA
GOCL08B60 HCL 8



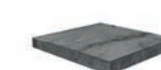
7x80 . 2^{6/8}"x32"
BATTISCOPA
GOCL08R80 HCL 8 Rett.



33x60 . 13"x24"
GRADONE LINEARE
G3CL08G HCL 8



33x80 . 13"x32"
GRADONE LINEARE
G3CL08RG HCL 8 Rett.



33x33 . 13"x13"
GRADONE ANGOLARE
G3CL08GA HCL 8
G3CL08RGA HCL 8 Rett.

Caratteristiche tecniche

Technical characteristics | Technische eigenschaften | Caracteristiques technique

Climb

Gruppo Bla EN 14411_G

HARD

Gres porcellanato a tutta massa
Through-body porcelain tile
Durchgefärbtes Feinsteinzeug
Le grès cérame pleine masse

Variazioni cromatiche
Shade Variation
Farbvarianten
Variations de couleur



RANDOM

	Valori limite previsti Established limits Vorgesehene grenzwerte Valeurs limites prevues	Prestazioni Performances Leistung Prestations	Norma Norms Norm Norme
Assorbimento d'acqua Water Absorption Wasseraufnahme Absorption d'eau	≤ 0,5%	~ 0,1%	EN ISO 10545-3
Resistenza alla flessione Bending strength Biegezugfestigkeit Resistance a la flexion	Modulo di rottura Modulus of rupture Bruchlast Module de rupture Min. ≥ 35 N/mm ²	~50 N/mm ²	EN ISO 10545-4
Resistenza al gelo Frost resistance Frostbeständigkeit Résistance au gel	Resistente Resistant Widerstandsfähig Résistant	Ingelivo Frost proof Frostsicher Ingelif	EN ISO 10545-12
Resistenza agli sbalzi termici Resistance to thermal shock Temperaturwechselbeständigkeit Résistance aux écarts de température	Resistente Resistant Widerstandsfähig Résistant	Resistente Resistant Widerstandsfähig Résistant	EN ISO 10545-9
Resistenza dei colori alla luce Colour resistance to light exposure Farbechtheit unter Lichteinfluss Résistance des couleurs à la lumière	Resistente Resistant Widerstandsfähig Résistant	Resistente Resistant Widerstandsfähig Résistant	DIN 51094
Resistenza allo scivolamento Skid resistance Rutschhemmung Résistance au glissement	Da R 9 a R 13 From R 9 to R 13 Von R 9 bis R 13 De R 9 à R 13	R 10 R 12 (Grip)	DIN 51130
	Da A a C From A to C Von A bis C De A à C	B C (Grip)	DIN 51097
Resistenza allo scivolamento_D-COF Skid resistance_D-COF Rutschhemmung_D-COF Résistance au glissement_D-COF	≥ 0,42	Conforme Conforms Gemäß Conforme	ANSI A 326.3: 2017 Release 2019
Resistenza allo scivolamento_B.C.R.A Skid resistance_B.C.R.A Rutschhemmung_B.C.R.A Résistance au glissement_B.C.R.A	≥ 0,40	Conforme Conforms Gemäß Conforme	Metodo BCRA

	Valori limite previsti Established limits Vorgesehene grenzwerte Valeurs limites prevues	Prestazioni Performances Leistung Prestations	Norma Norms Norm Norme
Resistenza all'attacco chimico Chemical resistance Beständigkeit gegen chemikalien Resistance a l'attaque chimique	GB minimo GB minimum Mind. GB GB minimum	Conforme Conforms Gemäß Conforme	EN ISO 10545-13
Resistenza alle macchie Stain resistance Fleckenbeständigkeit Resistance aux taches	Classe 3 minimo class 3 minimum Mind. klasse 3 classe 3 minimum	Conforme Conforms Gemäß Conforme	EN ISO 10545-14
Campo d'impiego consigliato Recommended use Anwendungsbereich Piece d'emploi conseillée			Multiattributo

Valori di riferimento validi per quasi la totalità delle nostre collezioni. Consultare il sito e i cataloghi di serie per maggiori specifiche. | Reference values valid for almost all our collections. Browse through our website and look at our catalogues for further specifications. | Eckwerte gelten fuer fast allen Serien. Für weitere Infos schauen Sie bitte unsere Web-Seite und die einzelne Brochuren. | Valeurs de référence valables pour la quasi totalité de nos collections. Consulter le site internet et les catalogues des séries pour plus d'informations.

TECHNICAL INFORMATION

L'azienda si riserva la facoltà di apportare variazioni ai prodotti e alle caratteristiche illustrate in questo strumento.
I colori sono da ritenersi puramente indicativi.

The company reserves the right to make any change to products and features shown in this catalogue.
All colors are purely a guide.

Das Werk behält sich vor, das Recht Änderungen an den in diesem Katalog enthaltenen Produkten und dessen Eigenschaften vorzunehmen.
Farbabweichungen vorbehalten.

L'usine se réserve le droit d'apporter des modifications aux produits et aux caractéristiques présentées dans cet outil.
Les couleurs doivent être considérées à titre purement indicatif.

È vietata la riproduzione, anche parziale, dello strumento in tutte le sue forme.
Any kind of copy of this catalogue, even partial reproduction, is prohibited.
Das Werk ist urheberrechtlich geschützt. Vervielfältigung sowie Einspeicherung und Verarbeitung in welcher Form auch immer ist unzulässig und strafbar.
La reproduction, même partielle, de l'instrument sous toutes ses formes est interdite.

© 2023 Ceramica del Conca S.p.A. All rights reserved.

JUNE / 2023



Ceramics of Italy



Ceramica del Conca S.p.a.
Via Croce, 8 - 47832 San Clemente (RN) - Italy
Tel. (+39) 0549 996037 - Fax (+39) 0549 996038

www.delconca.com - info@delconca.com



OFFICINE BONFIGLIOLI

