

ASORI COLLECTION

10 x 10 cm
Thickness: 10 mm

Hand painted
designs

Asori or Mediterranean Sea...

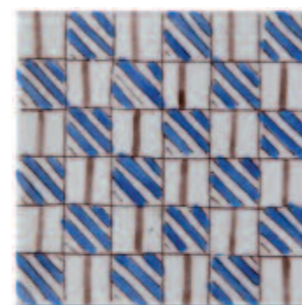
The Mediterranean shores are full of richly decorated pottery and ceramics.

It is there that we found inspiration for the Asori range which means Mediterranean in Ancient Greek.

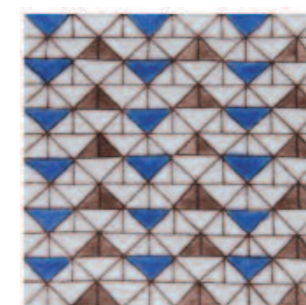
The association of blue and brown gives to this line the modernity we were seeking.

The design under crackled glazing adds subtlety and elegance.

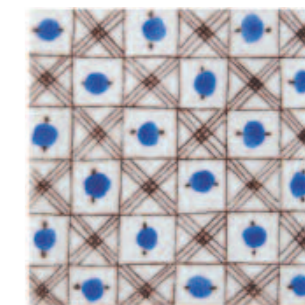
This collection offers countless interpretations thanks to its several designs realised on a 10x10 cm terracotta tile. ■



SABRA BLUE
DOA1010C03 **1F P**



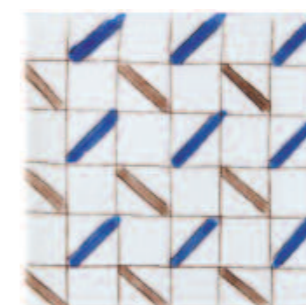
SBEITLA BLUE
DOA1010C05 **2F P**



AVIGNON BLUE
DOA1010C08 **1F P**



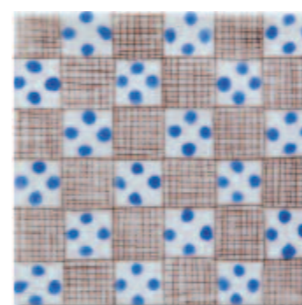
LISBONNE BLUE
DOA1010C09 **2F P**



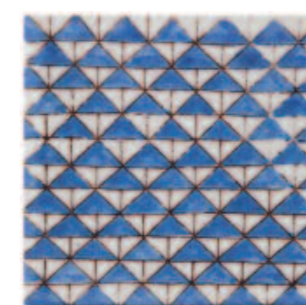
FEZ BLUE
DOA1010C02 **1F P**



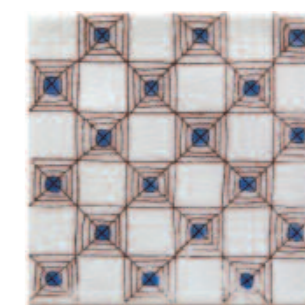
SOUFIANA BLUE
DOA1010C04 **2F P**



BULLAREGIA BLUE
DOA1010C01 **2F P**



DOUGGA BLUE
DOA1010C07 **2F P**



BEJAIA BLUE
DOA1010C06 **1F P**



CRACKLED OFF WHITE
DOA1010C10 **5B M**