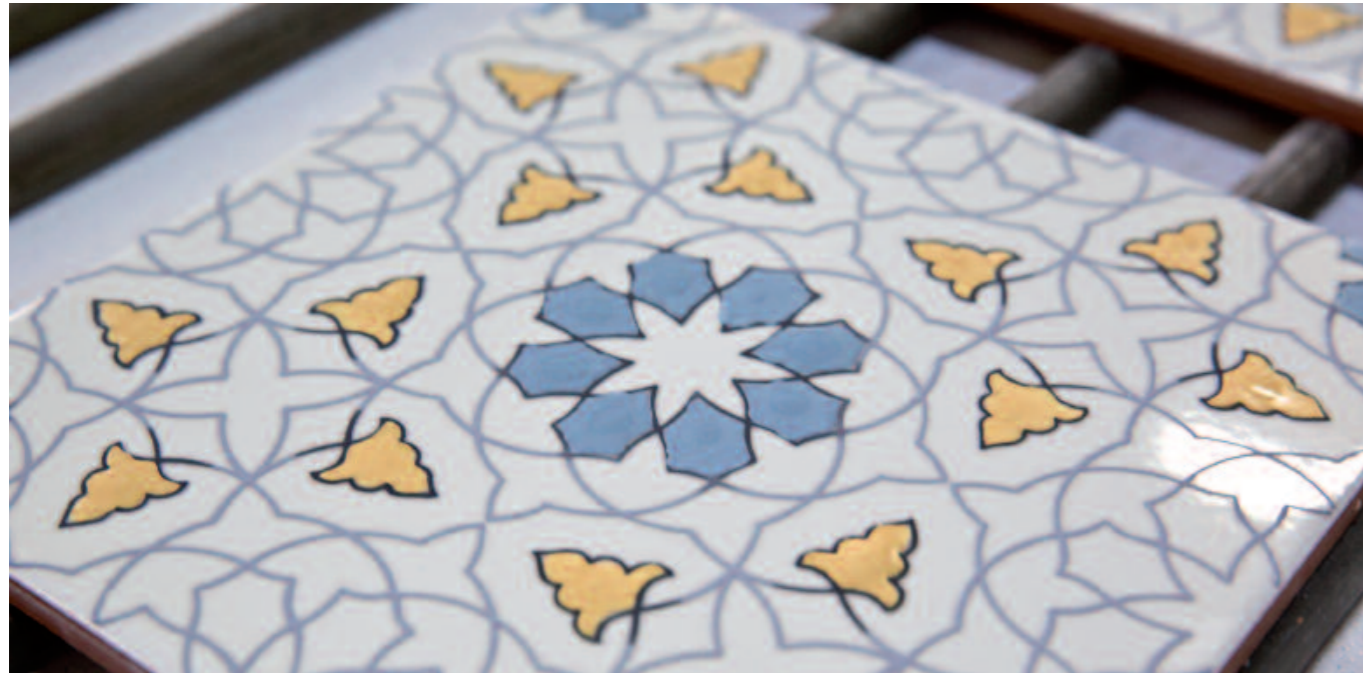


NOSTALGIA

20 x 20 cm
Thickness: 11 mm



Design under crackled glazing



The hand painted design protected under a crackled glazing

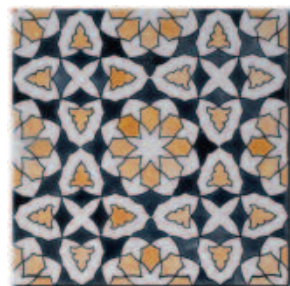
Painting under glazing as well as the thickness of the terracotta body give a lot of prestige to this collection. The designs of the Nostalgia range go back in time and make the finesse of Orient and the grace of Andalusia come back to life. ■



CRACKLED BLACK - 20 x 20 cm
DON2020U02 **2B M**



CRACKLED WHITE - 20 x 20 cm
DON2020U01 **2B M**



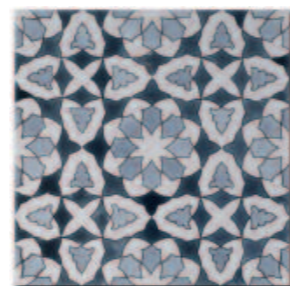
CHLOÉ SPRING - 20 x 20 cm
DON2020C13 **1B P**



CHLOÉ SUMMER - 20 x 20 cm
DON2020C12 **1B P**



CHLOÉ AUTUMN - 20 x 20 cm
DON2020C14 **1B P**



CHLOÉ WINTER - 20 x 20 cm
DON2020C11 **1B P**

NOSTALGIA

20 x 20 cm
Thickness: 11 mm

Painting on enamel

These tiles are hand painted on a non-fired glazing. The patterns are made on the enamel using serigraphy and then filled in by hand with colours using a brush.

Once the design is finished, a crackled enamel is applied on the tile. The design is protected by two layers of enamel that is fired at 1040°C. The body has a thickness of 11 mm. ■



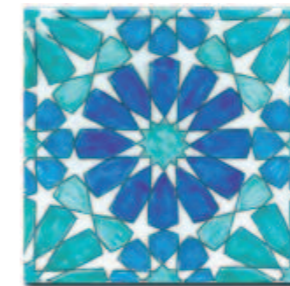
PINAR - 20 x 20 cm
DON2020C10 **1B P**



ADALIA - 20 x 20 cm
DON2020C01 **1B P**



MARBELLA RUST - 20 x 20 cm
DON2020C09 **1B P**



MARBELLA BLUE - 20 x 20 cm
DON2020C08 **1B P**

