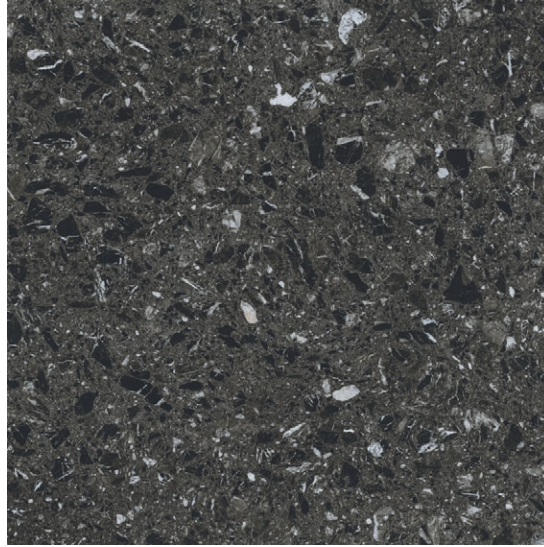




**VENEZIA CREAM**

90 X 90 / 36" X 36" REC.  $\bar{x}$   
90 X 90 / 36" X 36" REC. NPLUS

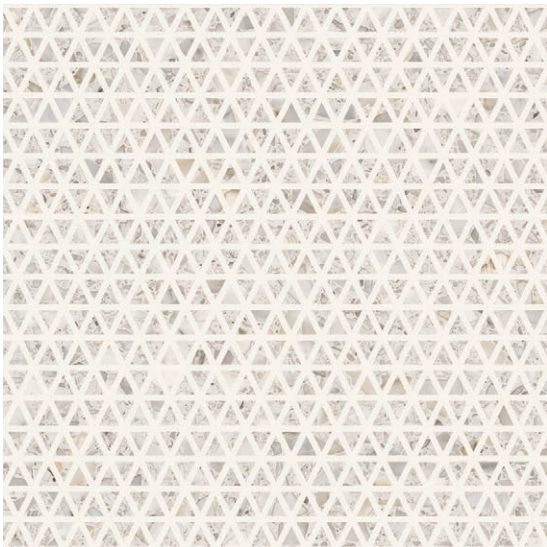
**N9A1  
N9C1**



**VENEZIA BLACK**

90 X 90 / 36" X 36" REC.  $\bar{x}$   
90 X 90 / 36" X 36" REC. NPLUS

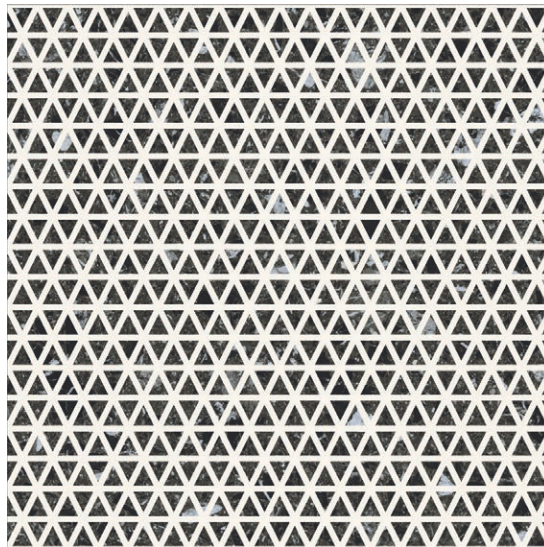
**N9A2  
N9C2**



**VENEZIA RIALTO CREAM**

90 X 90 / 36" X 36" REC.  $\bar{x}$   
90 X 90 / 36" X 36" REC. NPLUS

**N9A2  
N9C2**



**VENEZIA RIALTO BLACK**




90 X 90 / 36" X 36" REC.  $\bar{x}$   
90 X 90 / 36" X 36" REC. NPLUS

**N9A2  
N9C2**

TECHNICAL FEATURES — CARACTERÍSTICAS TÉCNICAS

-  **PORCELAIN TILES**  
PORCELÁNICO
-  **FLOOR TILES**  
PAVIMENTO
-  **MATT MATE**
-  **GLOSS BRILLO**
-  **POLISHED PULIDO**
-  **RECTIFIED RECTIFICADO**
-  **DESTONIFIED V2**  
DESTONIFICADO V2

PACKING LIST — LISTA DE EMBALAJE

FORMATO SIZE	PIEZAS PIECES					 EUROPALLET			
		Kg.	m <sup>2</sup>	CAJAS BOXES	m <sup>2</sup>	Kg.	CAJAS BOXES	m <sup>2</sup>	Kg.
90 X 90	1	21,6	0,81	40	864	864			



**Steps & skirtings availables Pag. 223**  
Peldaños y rodapiés disponibles. Pag. 223

90°



Floor Tile / Pavimento VENEZIA BLACK 90 X 90 REC. NPLUS - VENEZIA RIALTO BLACK 90 X 90 REC. NPLUS



Wall Tile / Revestimiento VENEZIA RIALTO CREAM 90 X 90 REC. NPLUS  
Floor Tile / Pavimento VENEZIA CREAM 90 X 90 REC. NPLUS