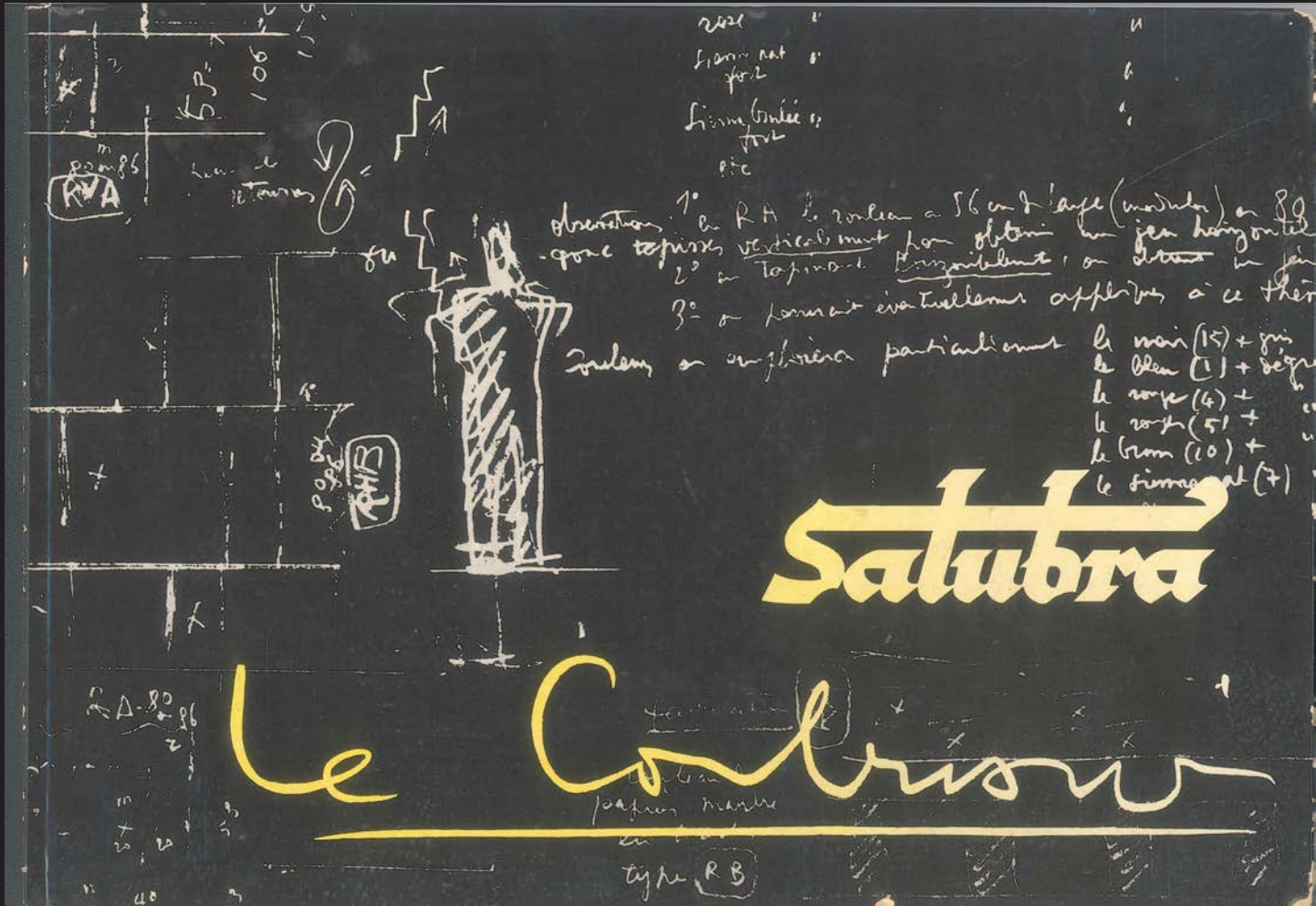


POINTILLE

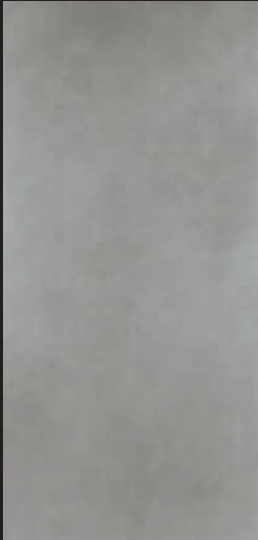


1959 ©

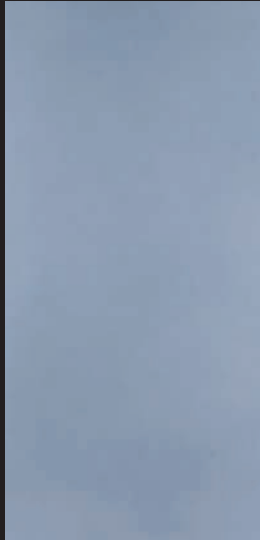
Pointillé è una reinterpretazione della carta da parati progettata da Le Corbusier per l'azienda svizzera Salubra, la stessa che diede inizio allo studio della Polychromie Architecturale. Pointillé è fedele allo spirito del maestro e utilizza la tecnologia contemporanea per riprodurre l'effetto sorprendente del colore a parete ricercato da Le Corbusier. Era il 1931 quando Le Corbusier creò il rivestimento per pareti basato su un motivo basilico quanto estemporaneo: il "puntino" tracciato allora ad olio su una tinta unita, per evitare che l'effetto di contrasto cromatico svanisse nel tempo per effetto della luce. La combinazione dei colori è rigorosamente tratta dalla Polychromie Architecturale.

Pointille is a reinterpretation of the wallpaper designed by Le Corbusier for the Swiss company Salubra, the same one that started the study of the Polychromie Architecturale. Pointille is faithful to the spirit of the Master and uses contemporary technology to reproduce the surprising effect of the wall color sought by Le Corbusier. It was 1931 when Le Corbusier created the wall covering based on a basic and extemporaneous motif: the "dot", later traced in oil on a solid colour base. This was made to prevent the effect of chromatic contrast fading away over time due to the effect of light. The combination of the colours is strictly taken from the Polychromie Architecturale.

POINTILLE



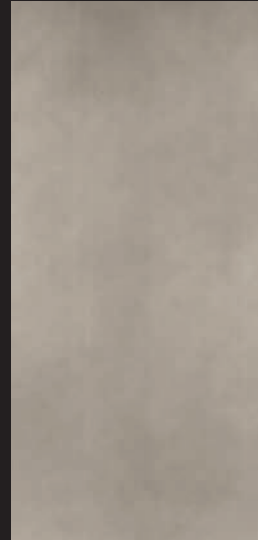
Pointillé
32011 -
gris 31



Pointillé
32020 -
bleu outremer 31



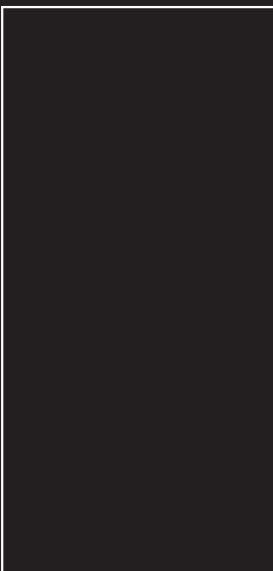
Pointillé
32042 -
vert anglais pâle



Pointillé
32142 -
ombre naturelle claire



Pointillé
4320B -
blanc ivoire



120x250
48"x100"



60x250
24"x100"



60x120
24"x48"



30x120
12"x48"



○
POINTILLE
32011 - GRIS 31
120x250 . 48"x100"
≠ 6 mm

○
TOKYO
4320E - NOIR D'IVOIRE
120x120 . 48"x48"
≠ 6 mm

○
BETON
BLANC
120x250 . 48"x100"
≠ 6 mm



○
POINTILLE
32042 - VERT ANGLAIS PÂLE
120x250 . 48"x100"
≠ 6 mm



○
BETON
BLANC
60x120 . 24"x48"
≠ 12 mm





POINTILLE
32142 - OMBRE NATURELLE CLAIRE
120x250 . 48"x100"
≠ 6 mm



MOLITOR
32140 - OMBRE NATURELLE 31
60x250 . 24"x100"
≠ 6 mm





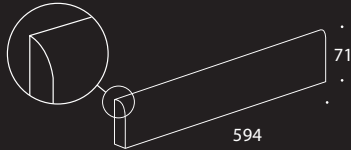
○
MOLITOR
32140 - OMBRE NATURELLE 31
120x120 . 48"x48" - 60x120 . 24"x48"
≠ 12 mm

Pezzi speciali . Special trims

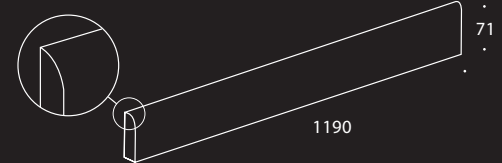
! Tutte le misure sono in millimetri . All sizes are in millimetres

Battiscopa . Skirting

Battiscopa 60
≠12mm



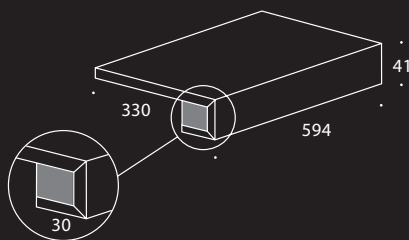
Battiscopa 120
≠6 mm



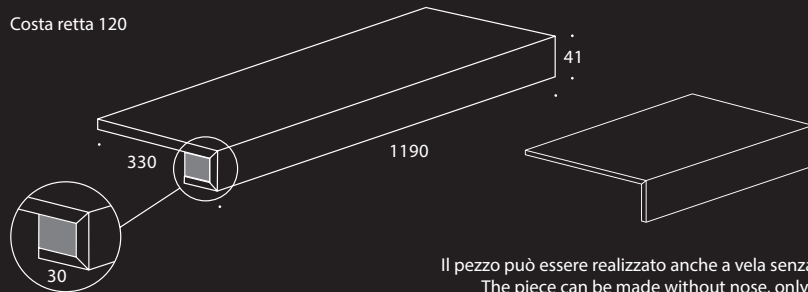
(!)
Tutte le misure sono in millimetri
All sizes are in millimetres

Gradoni costa retta . Costa retta steptreads

Costa retta 60



Costa retta 120



Il pezzo può essere realizzato anche a vela senza rientranza
The piece can be made without nose, only at 90°

Per dimensioni o spessori diversi da quelli rappresentati contattare Gigacer Service
For inquiries concerning different thicknesses and sizes from the ones indicated, please contact Gigacer Service

Coefficiente di attrito . Coefficient of friction

LASTRE DI GRES PORCELLANATO MULTISTRATO . MULTILAYER PORCELAIN SLABS ISO 13006 - G - Bia UGL (E ≤ 0,5%) UNI EN 14411 - G -

			SPESSORE THICKNESS	DIN 51130	DIN 51097	BCR	BRITISH PENDULUM BS7976	R9729 UPI/ EMPA	DCOF (SECTION 9.6 ANSI A 137.1.2012)
	COEFFICIENTE D'ATTRITO COEFFICIENT OF FRICTION	TOKYO	≠6mm	R10	A	> 0,40	-	GS1	> 0,42 wet
		MOLITOR	≠6mm	R10*	-	> 0,40	-	GS1	> 0,42 wet
			≠12mm ≠24mm	R10	A + B	> 0,40	> 36 WET	GS2/GB1	> 0,42 wet
		BETON	≠6mm ≠12mm	-	-	> 0,40	-	GS1	> 0,42 wet

* Dipende dal colore scelto. It depends on the chosen colour.

Non si danneggia con i detergenti chimici anticovid. / Does not damage with chemical detergents anticovid.

Photo credits: ©FLC, FLC/ADAGP, FLC/Prolitteris 2014 - Reproductions of the works and portraits of Le Corbusier: © FLC/ADAGP