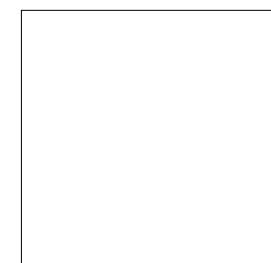
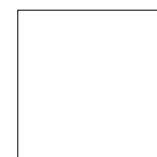


PETRI

TERRAZO



100X100
99,55x99,55 cm - 39.19"x39.19"



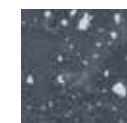
60x60
59,55x59,55 cm - 23.45"x23.45"



Beige



Anthracite



Blue



Burgundy



Stamp

SPECIAL PIECES. PEZZI SPECIALI. PIEZAS ESPECIALES

7,5X100 rodapié
7,3x99,55 cm - 2.87"x39.19"

7,5X60 rodapié
7,3x59,55 cm - 2.87"x23.44"



30X30 mosaico natural 5x5
29,75x29,75 cm - 11.71"x11.71"

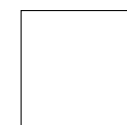


42,2x34 mosaico trencadís
42,2x34 cm - 16.61"x13.39"

THICKNESS. SPESSORE. ESPESORES

1 cm / 0.39" approx. 100x100 cm / 60x60 cm FORMATS

FINISHES FINITURI ACABADOS



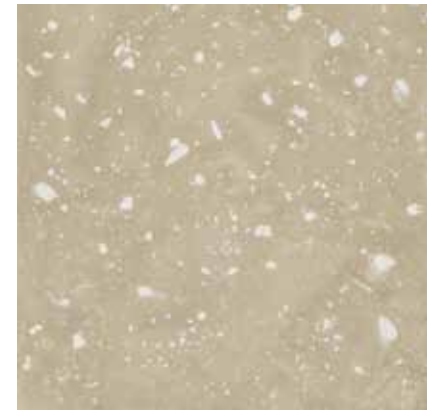
Natural

PETRI

PETRI BEIGE

CLASE 2 R10 PTV>36
 UNE - ENV 12633 DIN 51130 BS 7976

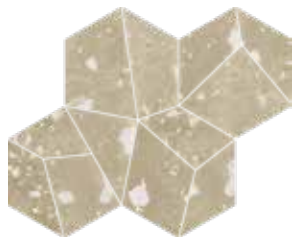
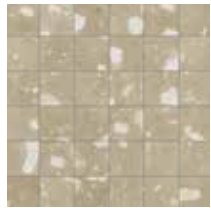
BASE TILES.BASE.BASES



Petri beige natural*
 99,55x99,55 cm - 39.19x39.19"
 G-6284

Petri beige natural**
 59,55x59,55 cm - 23.45"x23.45"
 G-6180

SPECIAL PIECES.PEZZI SPECIALI. PIEZAS ESPECIALES



Petri beige natural mosaico 5x5
 29,75x29,75 cm - 11.71"x11.71"
 G-6558

Petri beige mosaico trencadís 42,2x34
 42,2x34 cm - 46.61"x13.39"
 G-5211



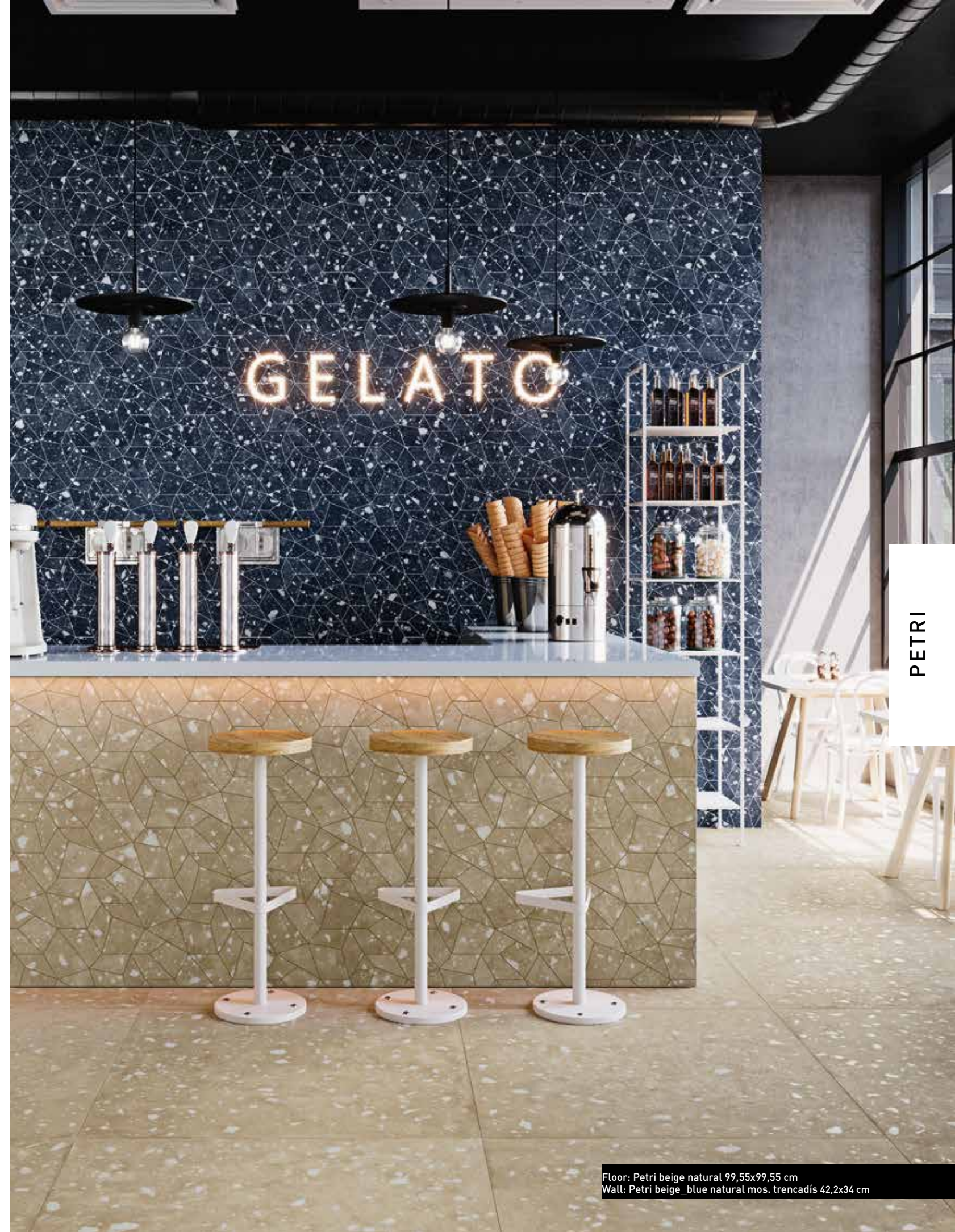
Petri beige natural rodapié 100
 7,3x99,55 cm - 2.87"x39.19"
 G-5117



Petri beige natural rodapié 60
 7,3x59,55 cm - 2.87"x23.45"
 G-5075

*6 DIFFERENT ALEATORY PATTERNS.
 *6 DECORACIONES DIFERENTES ALEATORIAS.

**12 DIFFERENT ALEATORY PATTERNS.
 **12 DECORACIONES DIFERENTES ALEATORIAS.



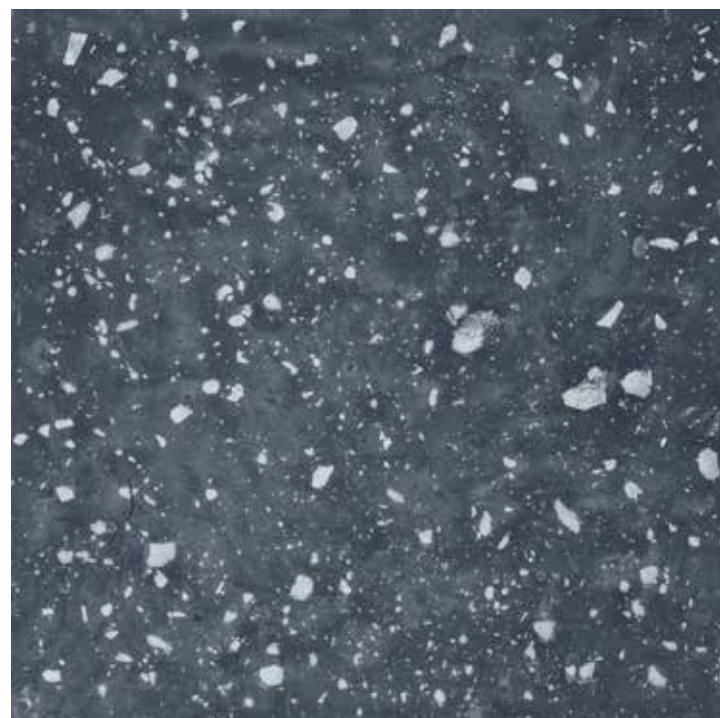
Floor: Petri beige natural 99,55x99,55 cm
 Wall: Petri beige_blue natural mos. trencadís 42,2x34 cm

PETRI

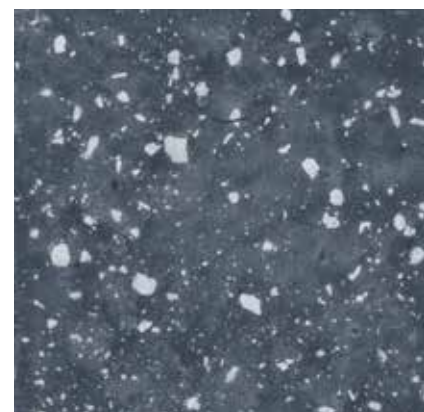
PETRI BLUE

CLASE 2 R10 PTV>36
 UNE - ENV 12633 DIN 51130 BS 7976

BASE TILES.BASE.BASES



Petri blue natural*
 99,55x99,55 cm - 39.19x39.19"
 G-6284

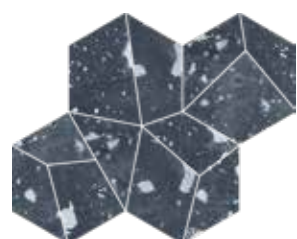


Petri blue natural**
 59,55x59,55 cm - 23.45"x23.45"
 G-6180

SPECIAL PIECES.PEZZI SPECIALI. PIEZAS ESPECIALES



Petri blue natural mosaico 5x5
 29,75x29,75 cm - 11.71"x11.71"
 G-6558



Petri blue mosaico trencadís 42,2x34
 42,2x34 cm - 46,61"x13,39"
 G-5211



Petri blue natural rodapié 100
 7,3x99,55 cm - 2.87"x39.19"
 G-5117



Petri blue natural rodapié 60
 7,3x59,55 cm - 2.87"x23.45"
 G-5075

*6 DIFFERENT ALEATORY PATTERNS.
 *6 DECORACIONES DIFERENTES ALEATORIAS.

**12 DIFFERENT ALEATORY PATTERNS.
 **12 DECORACIONES DIFERENTES ALEATORIAS.

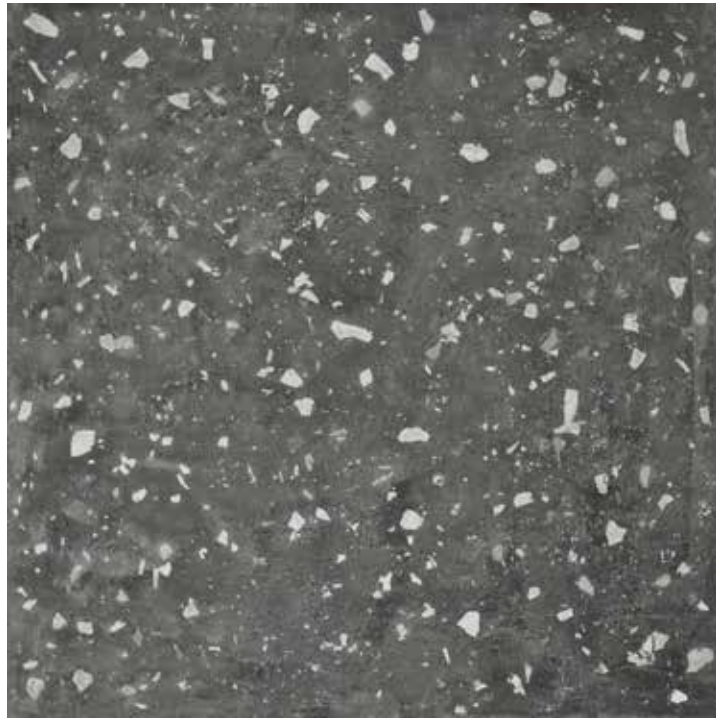


Petri blue natural 59,55x59,55 cm

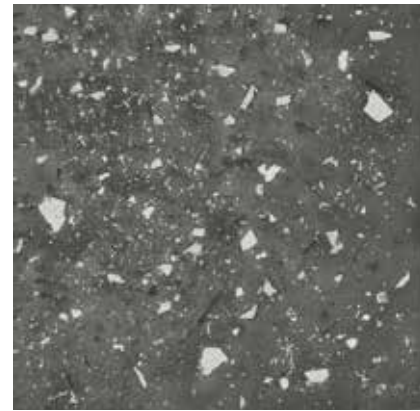
PETRI ANTHRACITE

CLASE 2	R10	PTV>36
UNE - ENV 12633	DIN 51130	BS 7976

BASE TILES.BASE.BASES

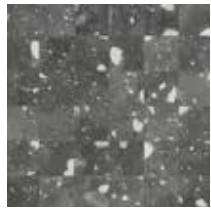


Petri anthracite natural*
99,55x99,55 cm - 39.19x39.19"
G-6284

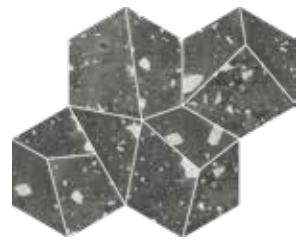


Petri anthracite natural**
59,55x59,55 cm - 23.45"x23.45"
G-6180

SPECIAL PIECES.PEZZI SPECIALI. PIEZAS ESPECIALES



Petri anthracite natural mosaico 5x5
29,75x29,75 cm - 11.71"x11.71"
G-6558



Petri anthracite mosaico trencadís 42,2x34
42,2x34 cm - 46,61"x13,39"
G-5211



Petri anthracite natural rodapié 100
7,3x99,55 cm - 2.87"x39.19"
G-5117



Petri anthracite natural rodapié 60
7,3x59,55 cm - 2.87"x23.45"
G-5075

*6 DIFFERENT ALEATORY PATTERNS.
*6 DECORACIONES DIFERENTES ALEATORIAS.

**12 DIFFERENT ALEATORY PATTERNS.
**12 DECORACIONES DIFERENTES ALEATORIAS.



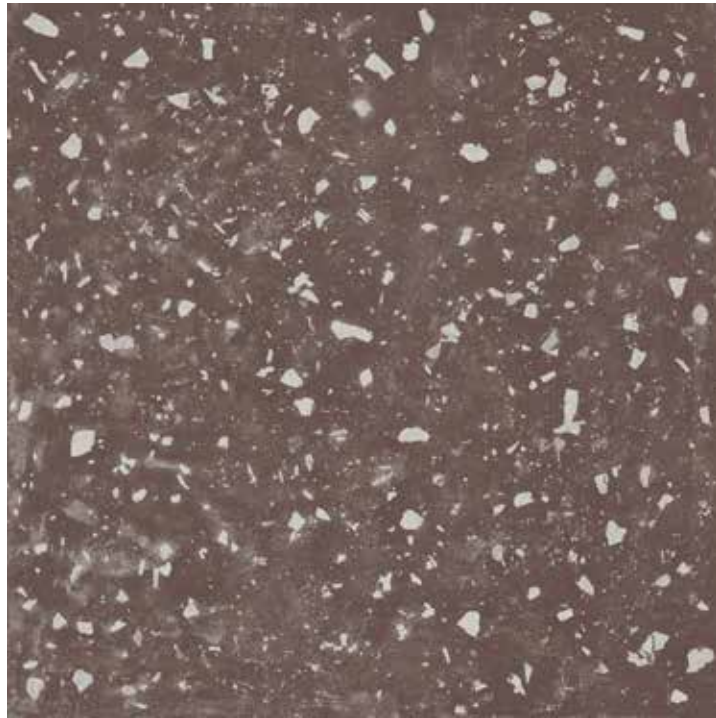
PETRI

Petri anthracite natural 99,55x99,55 cm

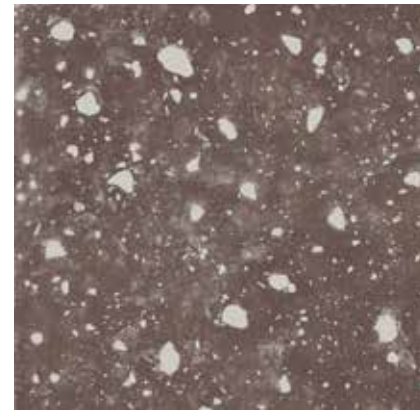
PETRI BURGUNDY

CLASE 2 R10 PTV>36
 UNE - ENV 12633 DIN 51130 BS 7976

BASE TILES.BASE.BASES

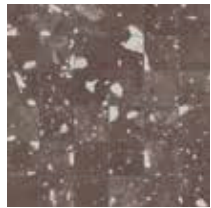


Petri Burgundy natural*
 99,55x99,55 cm - 39.19x39.19"
 G-6284

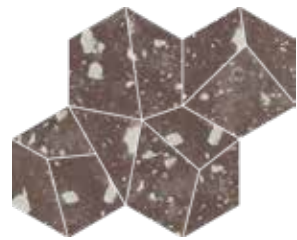


Petri Burgundy natural**
 59,55x59,55 cm - 23.45"x23.45"
 G-6180

SPECIAL PIECES.PEZZI SPECIALI. PIEZAS ESPECIALES



Petri Burgundy natural mosaico 5x5
 29,75x29,75 cm - 11.71"x11.71"
 G-6558



Petri Blue mosaico trencadís 42,2x34
 42,2x34 cm - 46,61"x13,39"
 G-5211



Petri Burgundy natural rodapié 100
 7,3x99,55 cm - 2.87"x39.19"
 G-5117



Petri Burgundy natural rodapié 60
 7,3x59,55 cm - 2.87"x23.45"
 G-5075

*6 DIFFERENT ALEATORY PATTERNS.
 *6 DECORACIONES DIFERENTES ALEATORIAS.

**12 DIFFERENT ALEATORY PATTERNS.
 **12 DECORACIONES DIFERENTES ALEATORIAS.



Petri burgundy natural 59,55x59,55 cm

PETRI

PETRI STAMP

BASE TILES.BASE.BASES

CLASE 2 R10 PTV>36
UNE - ENV 12633 DIN 51130 BS 7976



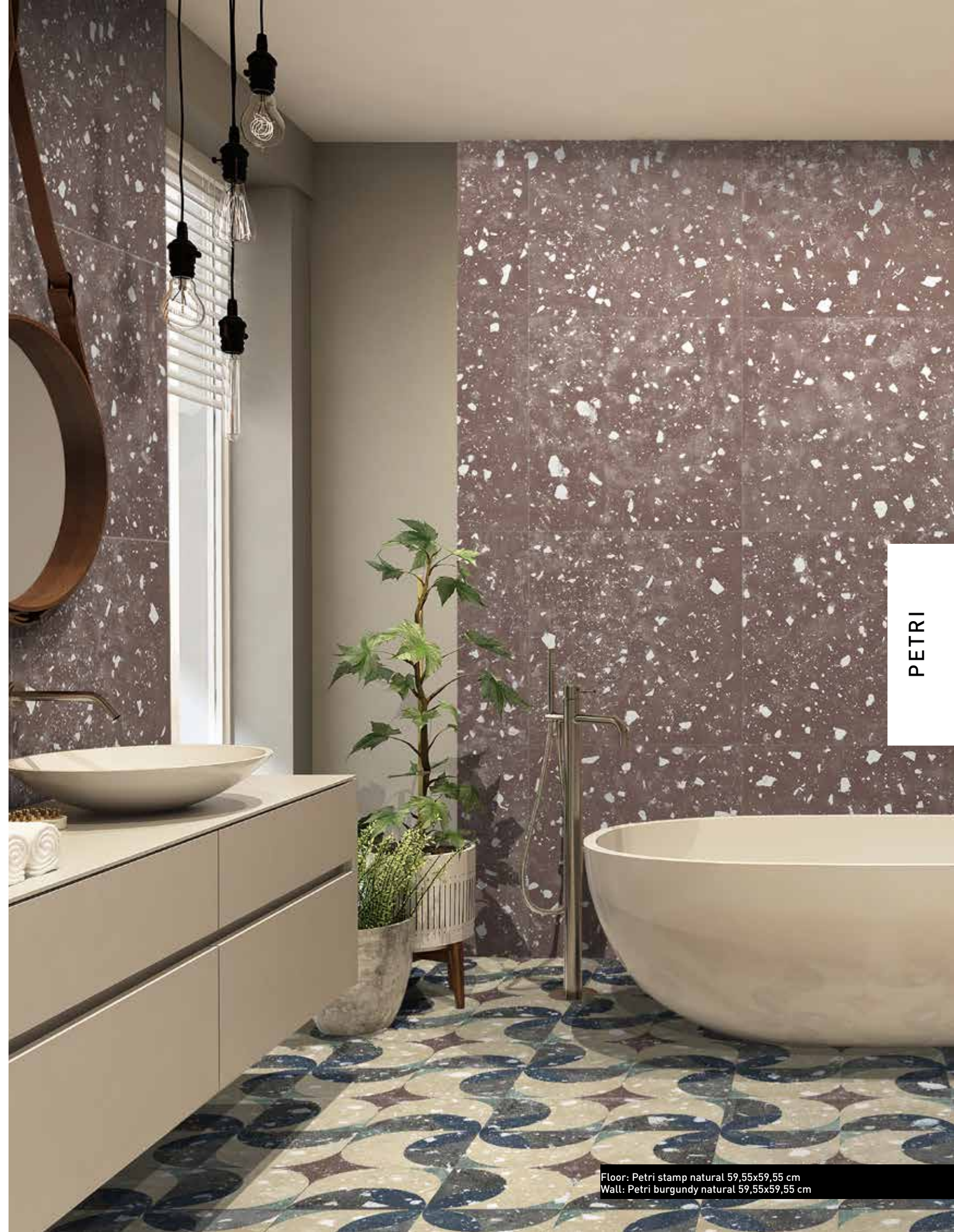
Petri stamp natural*
99,55x99,55 cm - 39.19x39.19"
6-6372



Petri stamp natural**
59,55x59,55 cm - 23.45"x23.45"
6-6234

*6 DIFFERENT ALEATORY PATTERNS.
*6 DECORACIONES DIFERENTES ALEATORIAS.

**12 DIFFERENT ALEATORY PATTERNS.
**12 DECORACIONES DIFERENTES ALEATORIAS.



PETRI

Floor: Petri stamp natural 59,55x59,55 cm
Wall: Petri burgundy natural 59,55x59,55 cm

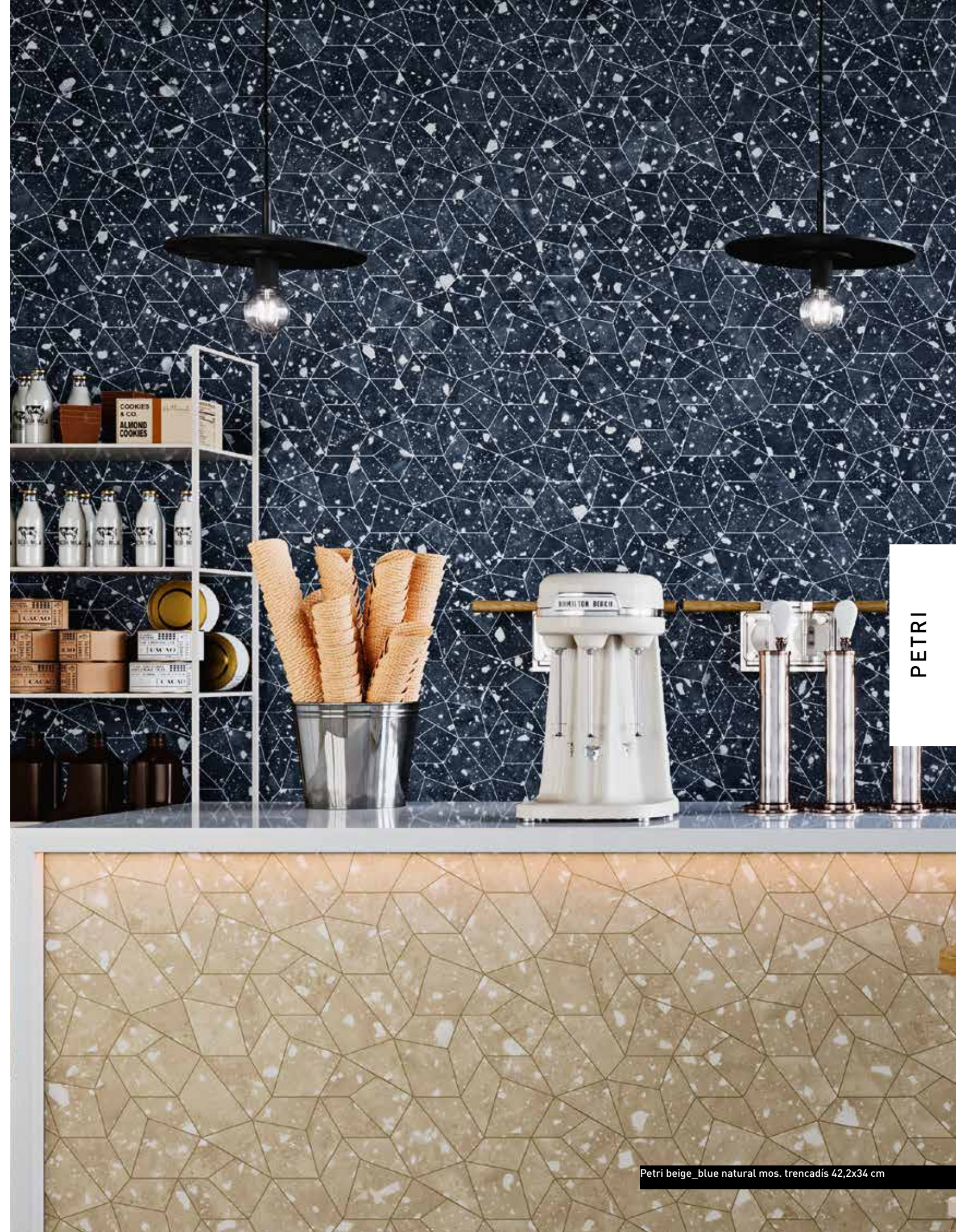
TECHNICAL CHARACTERISTICS.CARATTERISTICHE TECNICHE.CARACTERÍSTICAS TÉCNICAS

MEASUREMENTS AND SURFACES APPEARANCE DIMENSIONI E ASPETTO SUPERFICIALE MEDIDAS Y ASPECTO SUPERFICIAL	STANDARD TEST METHOD METODO DELLA NORMA MÉTODO DE ENSAYO	STANDARD PRESCRIBED VALUES VALORE PRESCRITTO VALORES STANDARD NORMA	Petri	collection *
Length and width. <i>Lunghezza e larghezza.</i> Longitud y anchura. Länge und Breite	ISO 10545-2	± 0,6% max.	±	0,2%
Orthogonality. <i>Ortogonalità.</i> Ortogonalidad. Rechtwinkligkeit	ISO 10545-2	± 0,5% max.	±	0,2%
Straightness of sides. <i>Rettilineità dei lati.</i> Rectitud de lados. Kantengeradigkeit	ISO 10545-2	± 0,5% max.	±	0,2%
Surfaces flatness. <i>Planarità.</i> Planitud. Ebenflächigkeit	ISO 10545-2	± 0,5% max.	±	0,5%
PHYSICAL PROPERTIES PROPIETÀ FISICHE PROPIEDADES FÍSICA				
Water absorption. <i>Assorbimento d'acqua.</i> Absorción de agua. Wasseraufnahme	ISO 10545-3	≤ 0,5%	≤	0,1%
Breaking strength, in N. <i>Carica di rottura, en N.</i> Carga de rotura, en N. Bruchlast, in N	ISO 10545-4	≥ 1300 N	≥	2400 N
Modulus of rupture. <i>Resistenza alla flessione.</i> Resistencia a la flexión. Biegefestigkeit	ISO 10545-4	≥ 35 N/mm ²	≥	40 N/mm ²
Resistance to thermal shock. <i>Resistenza agli sbalzi termici.</i> Resistencia al choque térmico. Temperaturwechselbeständigkeit	ISO 10545-9	No surface defects should be visible Non deve presentare difetti visibili No debe presentar defectos superficiales visibles	Resistant.	Resistente. Resistente
Frost resistance. <i>Resistenza al gelo.</i> Resistencia a la helada. Frostbeständigkeit	ISO 10545-12	No surface defects or cracks should be visible Non deve presentare difetti visibili No debe presentar defectos ni grietas superficiales visibles	Frost resistant	Antighiaccio Resistente a la Helada
Coefficient of friction. <i>Resistenza allo scivolamento.</i> Coeficiente de fricción. Rutschfestigkeit	DIN 51130 UNE-ENV 12633 DCOF - ANSI A 137.1 BS 7976	-	R 10**	CLASE 2** Natural Finish DCOF > 0.42 PTV > 36
Colour resistance to light. <i>Resistenza dei colori alla luce.</i> Resistencia del color a la luz. Lichtbeständigkeit der Farben	DIN 51094	There should be no colour variations No debe presentar variaciones de color		
CHEMICAL PROPERTIES PROPIETÀ CHIMICHE PROPIEDADES QUÍMICAS				
Chemical resistance. <i>Resistenza agli agenti chimici.</i> Resistencia química. Chemikalienbeständigkeit	ISO 10545-13	Resistance to household cleaning products and swimmingpools salts. Resistencia a productos de limpieza y sales para piscinas.	Min.	UB
Resistance to staining. <i>Resistenza alle macchie.</i> Resistencia a las manchas. Fleckenbeständigkeit	ISO 10545-14	Declared Value Valor Declarado	5	

*The Land values are the average of different production consignments. For further detail information, please check with our commercial network.
I valori dichiarati sono ottenuti da una media di prove effettuate su diverse produzioni. Per avere informazioni dettagliate consultare la rete commerciale
Los valores declarados son el promedio obtenido a través de ensayos de diferentes producciones. Para la obtención de una información detallada consultar a la red comercial.

** Class 2 - Tested in natural finish (It depends on the consignment). Test realized in internal laboratory / Provare realizzato in laboratorio interno / Ensayo realizado en laboratorio interno.

**** Dry Test, according to document DA DB-SUA/3 (Código Técnico de la Edificación) M° de Fomento. Average test result value, on May 2012.
Ensayo realizado, según documento DA DB-SUA/3 (Código Técnico de la Edificación) M° de Fomento. Valor medio a fecha Mayo 2012.



PETRI

Petri beige_blue natural mos. trencadis 42,2x34 cm