



# Take Care.

and Pad design Patrick Norguet



WALL  
T\_Snow 100x300 / T\_Night 100x300  
Tamis Steel 100x300

FLOOR  
T\_Steel 100x300

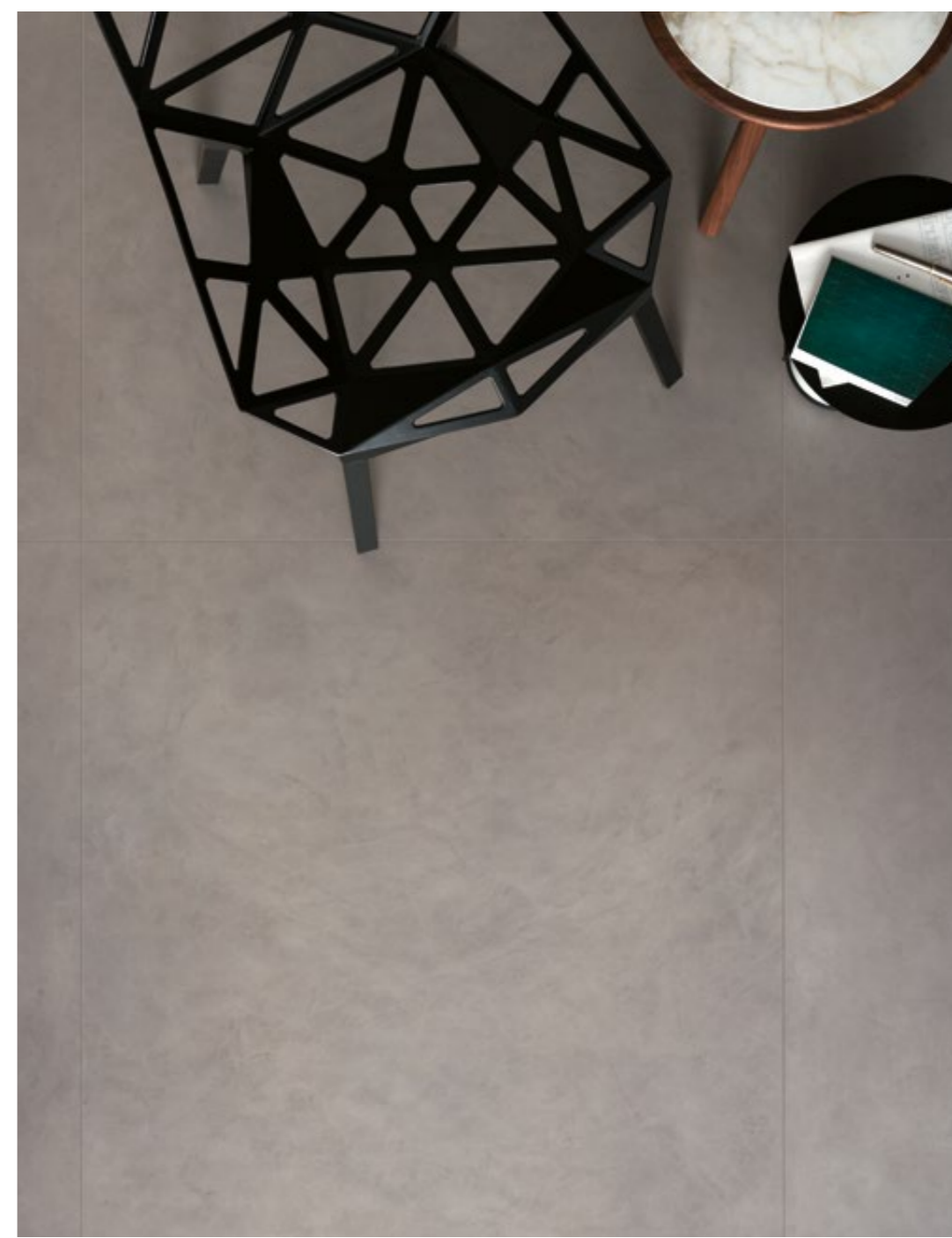


WALL  
Tamis Moon 100x300  
C\_Night 100x300

FLOOR  
C\_Moon 100x300

WALL  
C\_Steel 100x300  
Oakland Snow 100x300

FLOOR  
T\_Steel 100x100



T\_Steel 100x100



WALL  
Oakland Ground 100x300

FLOOR  
T\_Ground 100x100



C\_Night 100x150



FLOOR  
C\_Night 100x150

WALL  
C\_Grotund 100x150  
C\_Night 100x300



# Pad.

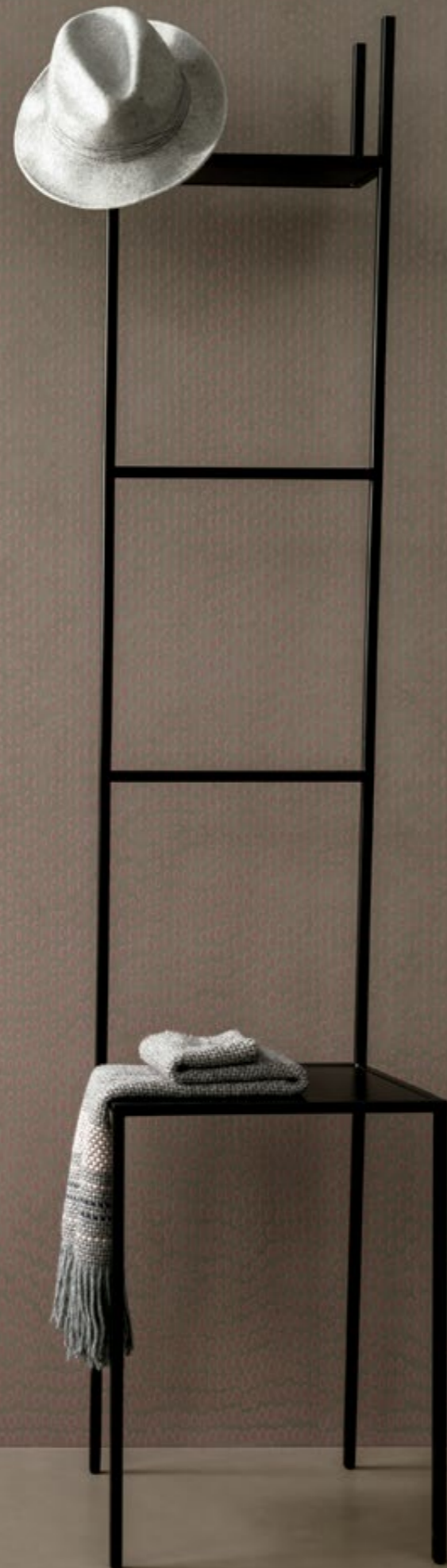
design Patrick Norguet





FLOOR  
T\_Ground 100x100

WALL  
Oakland Ground 100x300



## Decori

Pad design Patrick Norguet

Decors / Decors / Dekore

Oakland Moon



Oakland Steel



Oakland Ground

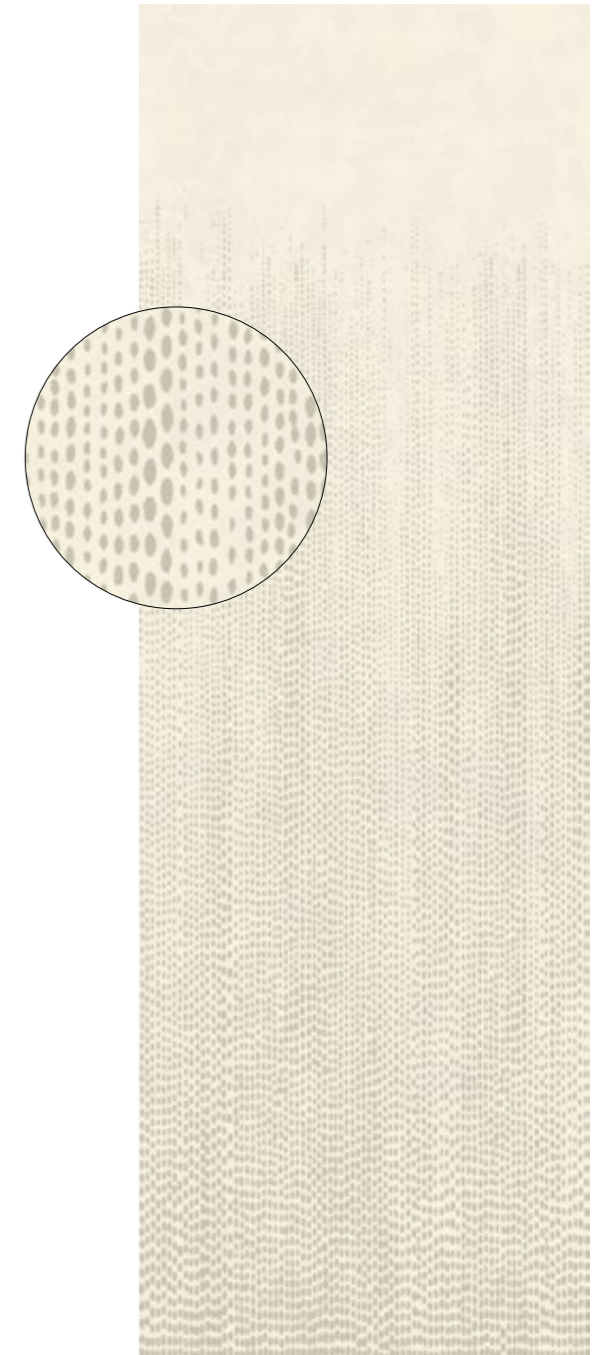


Oakland Night



## Oakland\*

Oakland Snow



## Formati <sup>RT1</sup>

Sizes / Formats / Formate



100x300cm  
39"x118"

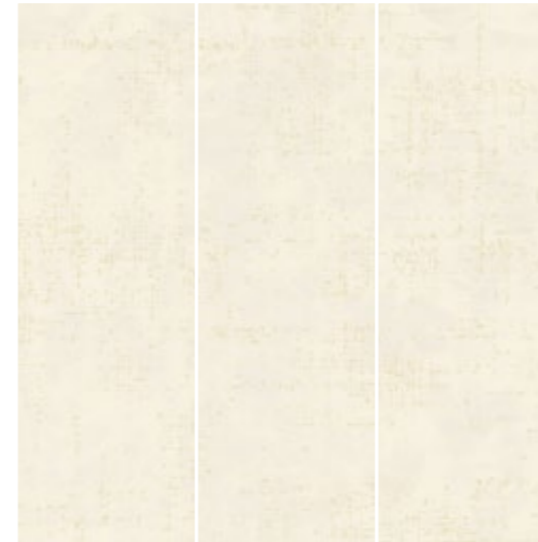
\*Utilizzabile solo a RIVESTIMENTO  
Suitable only for WALL COVERINGS  
Seulement pour le REVÊTEMENT  
Kann nur als VERKLEIDUNG verwendet werden



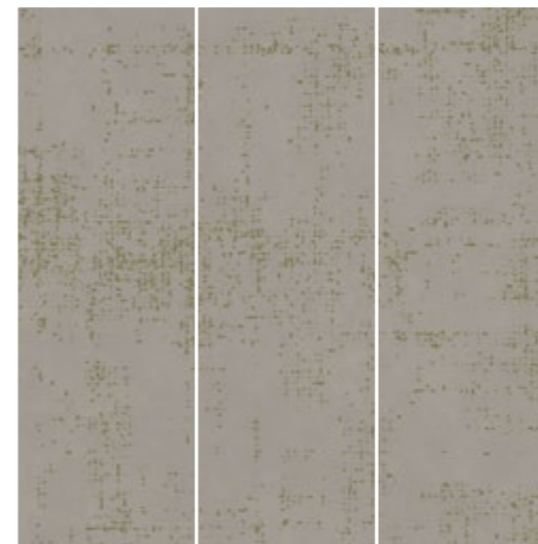
## Decori

Decors / Decors / Dekore

Tamis Snow A - B - C



Tamis Steel A - B - C



## Formati <sup>RT</sup>

Sizes / Formats / Formate



100x300cm  
39"x118"

\*Utilizzabile solo a RIVESTIMENTO  
Suitable only for WALL COVERINGS  
Seulement pour le REVÊTEMENT  
Kann nur als VERKLEIDUNG verwendet werden

Pad design Patrick Norguet

## Tamis\*

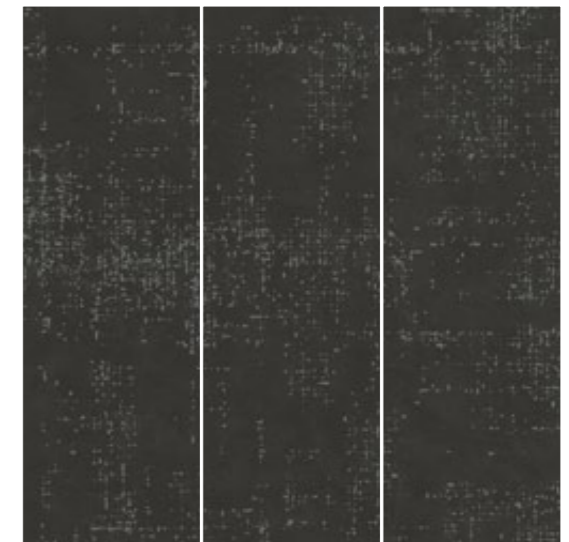
Tamis Moon A - B - C



Tamis Ground A - B - C



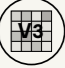
Tamis Night A - B - C



A	B	C
---	---	---



Gres porcellanato laminato UGL rinforzato con fibra di vetro  
 Laminated porcelain stoneware UGL reinforced with fibreglass  
 Grès cérame laminé UGL, renforcé avec de la fibre de verre  
 Laminiertes Feinsteinzeug UGL mit Glasfaserverstärkung

Stonalizzazione	Resistenza allo scivolamento	Fuga minima consigliata
Shading / Denuançage / Spielfarbig	Slip resistance / Résistance au glissement / Rutschfestigkeit	Minimum suggested joint Joint minimum conseillé Empfohlene Fugenbreite
ANSI A137.3	DIN 51130 R9	Posa a parete / Wall / Mur / Wand 1 mm (INDOOR)
	B.C.R. - TORTUS $\mu > 0,40$	Posa a Pavimento / Floor / Sol / Boden 2 mm (INDOOR)
	ANSI A326.3 DCOF $\geq 0.42$	Outdoor vedi Manuale Tecnico Slimtech See Slimtech Technical Manual

# Take Care.

and Pad design Patrick Norguet

Spessore / Thickness / Epaisseur / Stärke  
 5,5 mm → slimtech 5plus



## 5 Colori / Colors / Couleurs / Farben



## 2 Finiture / Finishes / Surfaces / Oberfläche

### TAKE



residenziale  
résidentiel  
Wohnbereiche



commerciale leggero  
light commercial  
commercial léger  
Leichte gewerbliche  
Anwendungen



commerciale intensivo  
intensive commercial  
commercial intensif  
Intensive gewerbliche  
Anwendungen

### CARE



residenziale  
résidentiel  
Wohnbereiche



commerciale leggero  
light commercial  
commercial léger  
Leichte gewerbliche  
Anwendungen



commerciale intensivo  
intensive commercial  
commercial intensif  
Intensive gewerbliche  
Anwendungen

## Imballi

Packing / Emballage / Verpackung

Articolo	Scatola			Pallet				
	cm	inch	pz.	mq	kg	scat.	mq	kg
Fondo 5plus	100x300*	118"x39"	1	3,00	34,5	13	39,0	448,5
Fondo 5plus	100x150	39"x59"	2	3,00	34,5	25	75,0	862,5
Fondo 5plus	100x100	39"x39"	2	2,00	23,0	25	50,0	575,0
Decoro Pad	100x300	118"x39"	1	3,00	34,5	13	39,0	448,5

\*Per ordini inferiori alle 5 lastre sarà addebitato il costo del pallet a € 80,00 netto. / The cost of the pallet, € 80,00 net, will be charged for orders less than 5 slabs. / Pour toutes commandes inférieures à 5 dalles, un cout de 80 € correspondant au cout de la palette sera ajouté. / Bei Abnahme einer Menge unter 5 Platten werden € 80,00 Netto für Verpackung/palette belastet.

## 3 Formati / Sizes / Formats / Formate <sup>LR<sup>T</sup></sup>

